

GOODRIDE TYRE CATALOGUE

Passenger Car, SUV and Light Truck

TYRE CATALOGUE Passenger Car, SUV and Light Truck



GOODRIDE



GOODRIDE CONTENTS

Passenger Car, SUV and Light Truck Tyres

ULTRA HIGH PERFORMANCE (UHP) 07-16
RS DS II SOLMAX 1 SA-37 SA-57

PASSENGER 17-18
Z-107

SUV / LTR 19-26
SOLMAX 1 SU318 SL369 SL366

COMMERCIAL LTR 27-30
SC328 H188

ALL SEASON 31-34
Z-401 SW613

WINTER 35-48
Z-507 SW608 SW658 SW618 SW612 Z-506 SW606

TRAILER 49-50
TRAILER MAX

TECHNICAL INFORMATION 51-65

EU TYRE LABEL 66

TYRE KNOWLEDGE 67-73

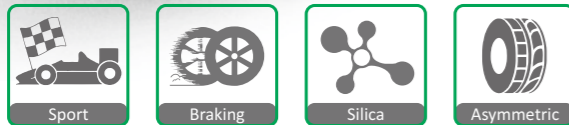
SPORT RS

SPORT RS



Benefits and Features

- Ideal drifting tyre with special design and components based on competition experiences
- Asymmetric tread design with big pattern blocks and special compound provides superior grip ability
- Continuous center rib generates better grip in dry conditions and enhances high-speed stability



Rim Size	15 - 20
Series	30 - 50
Speed Rating	V - W

Rim (inch)	Size	Service Index	Standard Rim	Rolling Resistance	Wet Grip	Wear	Rim (inch)	Size	Service Index	Standard Rim	Rolling Resistance	Wet Grip	Wear	
15"	195/50R15	82V	6.0J	/	/	/	18"	265/35ZR18 XL RS II	97W	9.5J	/	/	/	
	205/50R15 XL	89V	6.5J	/	/	/		285/35ZR18 XL RS II	101W	10.0J	/	/	/	
16"	205/45ZR16 XL	87W	7.0J	/	/	/	225/40ZR18 XL	92W	8.0J	/	/	/	/	
	225/50R16 XL	96W	7.0J	/	/	/	235/40ZR18 XL RS II	95W	8.5J	/	/	/	/	
17"	235/40ZR17	90W	8.5J	/	/	/	19"	275/30ZR19 XL	96W	9.5J	/	/	/	/
	245/40ZR17 XL	95W	8.5J	/	/	/	235/35ZR19 XL	91W	8.5J	/	/	/	/	
	215/45ZR17	87W	7.0J	/	/	/	285/35ZR19 XL	103W	10.0J	/	/	/	/	
	225/45ZR17 XL	94W	7.5J	/	/	/	20"	285/35ZR20 XL RS II	104W	10.0J	/	/	/	/
	235/45ZR17	94W	8.0J	/	/	/		255/40ZR20 XL RS II	101W	9.0J	/	/	/	/

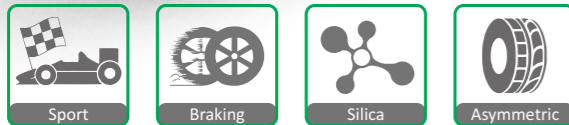


SPORT DS II



Benefits and Features

- Ideal drifting tyre with special design and components based on competition experiences
- Directional pattern design provides outstanding handling and superior grip ability
- Continuous center rib generates better grip in dry conditions and enhances high-speed stability



Rim Size	17 - 18
Series	35 - 45
Speed Rating	W

SPORT DS II

Rim (inch)	Size	Service Index	Standard Rim	Rolling Resistance	Wet Grip	Wear	Rim (inch)	Size	Service Index	Standard Rim	Rolling Resistance	Wet Grip	Wear
17"	245/40ZR17 XL	95W	8.5J	/	/	/	18"	255/35ZR18 XL	94W	9.0J	/	/	/
	255/40ZR17 XL	98W	9.0J	/	/	/		265/35ZR18 XL	97W	9.5J	/	/	/
	225/45ZR17 XL	94W	7.5J	/	/	/		235/40ZR18 XL	95W	8.5J	/	/	/



SOLMAX 1



Benefits and Features

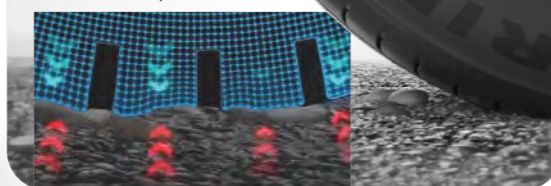
Variable-pitch noise-reduction pattern blocks, sound-bolts in 4 circumferential grooves, and the staggered arrangement of inner and outer lateral grooves to provide consumers with a more comfortable driving experience.

Hybrid Silane patent to optimize the tread compound and absorb road vibration effectively to further improved consumer's driving and experience

The patented Nanometer Mixing-Technology and High saturation pattern design, provide tires with better wear resistance and increased mileage.

Driving Comfort

Hybrid Silane™ to optimize tread rubber compound
Soft Tread Compound and Minimized Vibration



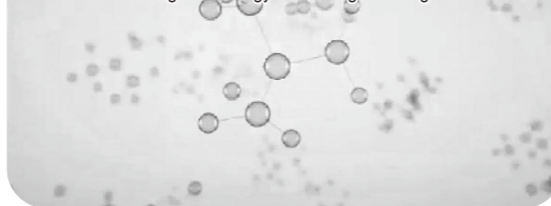
Strong Grip

Hybrid Formula™ - Super hybrid rubber compound Fast water drainage and strong grip



Improved Durability

Nanometer Mixing-Technology™ for longer mileage



Hybrid Silane
(Driving Comfort)



Hybrid Formula
(Strong Grip)



BPOT Technology
(Improved Durability)

Rim Size 17 - 22

Series 30 - 55

Speed Rating V - Y

SOLMAX 1

Rim (inch)	Size	Service Index	Standard Rim	W	S	YdB	Rim (inch)	Size	Service Index	Standard Rim	W	S	YdB	
17"	215/45ZR17 XL	91Y	7.0J	D	A	72 / B	19"	235/45ZR19 XL	99Y	8.0J	C	A	72 / B	
	225/45ZR17 XL	94Y	7.5J	C	A	72 / B		245/45ZR19	98Y	8.0J	C	A	71 / B	
	205/50R17 XL	93W	6.5J	C	A	72 / B		255/45ZR19 XL	104Y	8.5J	C	A	73 / B	
	225/50R17 XL	98W	7.0J	C	A	72 / B		265/45ZR19 XL	105Y	9.0J	C	A	73 / B	
	235/50R17	96W	7.5J	C	A	71 / B		235/50R19	99W	7.5J	C	A	71 / B	
	215/55R17 XL	98W	7.0J	C	A	72 / B		245/50R19 XL	105W	7.5J	C	A	72 / B	
	225/55R17 XL	101W	7.0J	C	A	72 / B		255/50R19 XL	107W	8.0J	C	A	73 / B	
	235/55R17 XL	103W	7.5J	C	A	72 / B		225/55R19	99W	7.0J	C	A	71 / B	
	18"	255/35ZR18 XL	94Y	9.0J	D	A		73 / B	235/55R19 XL	105W	7.5J	C	A	72 / B
		225/40ZR18 XL	92Y	8.0J	D	A		72 / B	245/55R19	103V	7.5J	C	A	71 / B
235/40ZR18 XL		95Y	8.5J	D	A	72 / B	255/55R19 XL	111W	8.0J	C	A	73 / B		
245/40ZR18 XL		97Y	8.5J	D	A	72 / B	20"	295/35ZR20 XL	105Y	10.5J	C	A	75 / B	
255/40ZR18 XL		99Y	9.0J	C	A	73 / B		315/35ZR20 XL	110Y	11.0J	C	A	75 / B	
225/45ZR18 XL		95Y	7.5J	C	A	72 / B		255/40ZR20 XL	101Y	9.0J	C	A	73 / B	
235/45ZR18 XL		98Y	8.0J	C	A	72 / B		275/40ZR20 XL	106Y	9.5J	C	A	73 / B	
245/45ZR18 XL		100Y	8.0J	C	A	72 / B		295/40ZR20 XL	110Y	10.5J	C	A	75 / B	
215/50R18		92W	7.0J	C	A	71 / B		305/40ZR20 XL	112Y	11.0J	C	A	75 / B	
225/50R18		95W	7.0J	C	A	71 / B		235/45ZR20 XL	100Y	8.0J	C	A	72 / B	
235/50R18 XL	101W	7.5J	C	A	72 / B	245/45ZR20 XL		103W	8.0J	C	A	72 / B		
245/50R18	100W	7.5J	C	A	71 / B	255/45ZR20 XL		105Y	8.5J	C	A	73 / B		
215/55R18 XL	99V	7.0J	C	A	72 / B	265/45ZR20 XL		108Y	9.0J	C	A	73 / B		
235/55R18	100W	7.5J	C	A	71 / B	275/45ZR20 XL	110Y	9.0J	C	A	73 / B			
255/55R18 XL	109W	8.0J	C	A	73 / B	245/50R20	102W	7.5J	C	A	71 / B			
19"	255/30ZR19 XL	91Y	9.0J	D	A	73 / B	255/50R20 XL	109W	8.0J	C	A	73 / B		
	235/35ZR19 XL	91Y	8.5J	D	A	72 / B	235/55R20 XL	105W	7.5J	C	A	72 / B		
	275/35ZR19 XL	100Y	9.5J	C	A	73 / B	255/55R20 XL	110W	8.0J	C	A	73 / B		
	225/40ZR19 XL	93Y	8.0J	D	A	72 / B	21"	275/30ZR21 XL	98Y	9.5J	C	A	73 / B	
	235/40ZR19 XL	96Y	8.5J	D	A	72 / B		315/30ZR21 XL	105Y	11.0J	C	A	75 / B	
	245/40ZR19 XL	98Y	8.5J	C	A	72 / B		245/35ZR21 XL	96Y	8.5J	C	A	72 / B	
	255/40ZR19 XL	100Y	9.0J	C	A	73 / B		295/35ZR21 XL	107Y	10.5J	C	A	75 / B	
	275/40ZR19 XL	105Y	9.5J	C	A	73 / B		285/40ZR21 XL	109Y	10.0J	C	A	75 / B	
	285/40ZR19 XL	107Y	10.0J	C	A	75 / B		255/45ZR21 XL	106W	8.5J	C	A	73 / B	
	295/40ZR19 XL	108Y	10.5J	C	A	75 / B		265/45ZR21 XL	108Y	9.0J	C	A	73 / B	
225/45ZR19 XL	96Y	7.5J	C	A	72 / B	275/45ZR21 XL		110Y	9.0J	C	A	73 / B		
22"	285/35ZR22 XL	106Y	10.0J	C	A	75 / B		22"	285/35ZR22 XL	106Y	10.0J	C	A	75 / B



SPORT SA-37

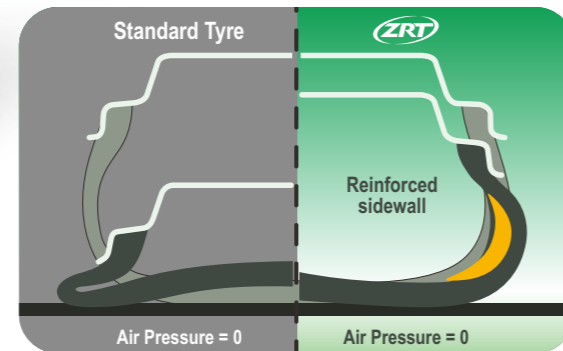


Benefits and Features

- New generation of asymmetric ultra high performance tyre for summer
- SILICA TECH compound helps to enhance wet grip providing shorter braking distance
- Strong center rib guarantees excellent handling on both wet and dry roads and on-center feel

ZC Rubber RunFlat Tyres (ZRT)

- ADVANCED CARCASS STRUCTURE**
Enhance the tyre body and avoid possible tyre failure during low pressure driving
- SPECIAL REINFORCED SIDEWALL CONSTRUCTION**
Supporting the tyres even if the air pressure dropped to zero
- ZC Rubber first generation RunFlat tyres with extraordinary performance in low air pressure situation



Rim Size	15 - 24
Series	30 - 65
Speed Rating	H - Y

SPORT SA-37

Rim (inch)	Size	Service Index	Standard Rim	Wet Grip	Wear	Rolling Noise	Rim (inch)	Size	Service Index	Standard Rim	Wet Grip	Wear	Rolling Noise
15"	185/65R15	88H	5.5J	D	B	70 / B	18"	235/50R18 XL	101V	7.5J	C	B	72 / B
	195/65R15	91V	6.0J	D	B	71 / B		245/50R18	100W	7.5J	C	B	71 / B
16"	195/45R16 XL	84V	6.5J	D	B	72 / B	245/50R18 ZRT	100W	7.5J	D	B	71 / 2	
	205/50R16	87W	6.5J	D	B	71 / B	215/55R18 XL	99V	7.0J	C	B	72 / B	
	225/50R16	92W	7.0J	D	B	71 / B	255/55R18 XL ZRT	109V	8.0J	D	B	72 / B	
	205/55R16	91V	6.5J	D	B	71 / B	19"	265/30ZR19 XL	93Y	9.5J	D	B	73 / B
	205/55R16 XL	94W	6.5J	D	B	72 / B		275/30ZR19 XL	96Y	9.5J	D	B	73 / B
	215/55R16	93V	7.0J	D	B	71 / B		235/35ZR19 XL	91Y	8.5J	D	B	72 / B
	225/55R16 XL	99W	7.0J	D	B	72 / B		245/35ZR19 XL	93Y	8.5J	D	B	72 / B
	225/55R16 XL ZRT	99W	7.0J	D	B	72 / 2		255/35ZR19 XL	96Y	9.0J	D	B	73 / B
17"	205/40ZR17 XL	84Y	7.5J	D	B	72 / B		275/35ZR19 XL ZRT	100W	9.5J	D	B	73 / B
	215/40ZR17 XL	87Y	7.5J	D	B	72 / B		225/40ZR19 XL	93Y	8.0J	D	B	72 / B
	245/40ZR17 XL	95Y	8.5J	D	B	72 / B		235/40ZR19	96Y	8.5J	D	B	71 / B
	205/45ZR17 XL	88Y	7.0J	D	B	72 / B	245/40ZR19 XL	98Y	8.5J	D	B	72 / B	
	215/45ZR17 XL	91Y	7.0J	D	B	72 / B	245/40ZR19 ZRT	94Y	8.5J	D	B	72 / B	
	225/45ZR17 XL	94Y	7.5J	D	B	72 / B	255/40ZR19 XL	100Y	9.0J	C	B	73 / B	
	225/45R17 XL ZRT	94W	7.5J	D	B	72 / 2	275/40R19 ZRT	101W	9.5J	D	B	72 / 2	
	235/45ZR17 XL	97Y	8.0J	D	B	72 / B	225/45ZR19 XL	96Y	7.5J	D	B	72 / B	
	245/45ZR17 XL	99W	8.0J	D	B	72 / B	245/45ZR19	98Y	8.0J	D	B	71 / B	
	255/45ZR17 XL	102W	8.5J	D	B	73 / B	245/45ZR19 ZRT	98Y	8.0J	D	B	71 / 2	
	205/50R17 XL	93W	6.5J	C	B	72 / B	255/45ZR19 XL	104Y	8.5J	D	B	73 / B	
	215/50R17 XL	95W	7.0J	C	B	72 / B	235/50R19	99W	7.5J	C	B	71 / B	
225/50R17 XL	98W	7.0J	D	B	72 / B	255/50R19 XL ZRT	107W	8.0J	D	B	73 / B		
225/50R17 XL ZRT	98W	7.0J	D	B	72 / 2	20"	225/30ZR20 XL	85Y	8.0J	D	B	72 / B	
235/50R17	96V	7.5J	D	B	71 / B		225/35ZR20 XL	90W	8.0J	D	B	72 / B	
205/55R17 XL	95W	6.5J	D	B	72 / B		245/35ZR20 XL	95Y	8.5J	D	B	72 / B	
215/55R17 XL	98W	7.0J	C	B	72 / B		255/35ZR20 XL	97W	9.0J	C	B	73 / B	
225/55R17 XL	101W	7.0J	C	B	72 / B		275/35ZR20 XL	102W	9.5J	D	B	73 / B	
225/55R17 XL ZRT	101W	7.0J	D	B	72 / 2		245/40ZR20 XL	99W	8.5J	D	B	72 / B	
235/55R17 XL	103W	7.5J	C	B	72 / B		245/45ZR20	99W	8.0J	D	B	71 / B	
18"	215/35ZR18 XL	84W	7.5J	D	B		72 / B	255/45ZR20 XL	105W	8.5J	C	B	73 / B
	225/35ZR18 XL	87Y	8.0J	D	B	72 / B	255/45R20 XL ZRT	105W	8.5J	D	B	73 / B	
	245/35ZR18 XL	92W	8.5J	D	B	72 / B	265/45ZR20 XL	108W	9.0J	C	B	73 / B	
	265/35ZR18 XL	97Y	9.5J	D	B	73 / B	245/50R20	102W	7.5J	C	B	71 / B	
	215/40ZR18 XL	89Y	7.5J	D	B	72 / B	265/50R20 XL	111W	8.5J	C	B	73 / B	
	225/40ZR18 XL	92Y	8.0J	D	B	72 / B	275/50R20 XL	113W	8.5J	B	B	73 / B	
	235/40ZR18 XL	95Y	8.5J	D	B	72 / B	235/55R20 XL	105W	7.5J	C	B	72 / B	
	245/40ZR18 XL	97Y	8.5J	D	B	72 / B	255/55R20 XL	110W	8.0J	C	B	73 / B	
	255/40ZR18 XL	99Y	9.0J	C	B	73 / B	21"	295/35ZR21 XL	107Y	10.5J	C	B	75 / B
	255/40ZR18 XL ZRT	99Y	9.0J	D	B	73 / B		265/40ZR21 XL	105W	9.5J	C	B	73 / B
	215/45ZR18 XL	93Y	7.0J	D	B	72 / B		315/40ZR21	111Y	11.0J	C	B	74 / B
	225/45ZR18 XL	95Y	7.5J	D	B	72 / B		265/45ZR21	104W	9.0J	C	B	72 / B
225/45R18 XL ZRT	95W	7.5J	D	B	72 / B	275/45ZR21 XL		110Y	9.0J	C	B	73 / B	
235/45ZR18 XL	98Y	8.0J	D	B	71 / B	22"		235/30ZR22 XL	90Y	8.5J	D	B	72 / B
245/45ZR18 XL	100Y	8.0J	D	B	72 / B			245/30ZR22 XL	92Y	8.5J	D	B	72 / B
245/45R18 ZRT	96W	8.0J	D	B	72 / 2			285/45R22 XL	114V	9.5J	D	B	75 / B
255/45ZR18	99W	8.5J	D	B	72 / B		24"	255/30ZR24 XL	97Y	9.0J	D	B	73 / B
255/50R18	95W	7.0J	D	B	71 / B								

ZRT ZC Rubber RunFlat Tyres

ZUPERACE SA-57



Benefits and Features

- New generation of directional Ultra High Performance tyre
- Circumferential V-grooves ensure outstanding water drainage
- Strong center ribs provides remarkable handling while steering
- Improved SILICA compounding enhance the wet and dry grip



M+S

Rim Size	14 - 24
Series	30 - 65
Speed Rating	H - W

ZUPERACE SA-57

Rim (inch)	Size	Service Index	Standard Rim	Wet Traction	Directional	XYdB	Rim (inch)	Size	Service Index	Standard Rim	Wet Traction	Directional	XYdB
15"	195/50R15	82V	6.0J	D	B	71 / B	18"	225/45ZR18 XL	95W	7.5J	D	B	72 / B
	195/55R15	85V	6.0J	D	B	71 / B		235/45ZR18 XL	98W	8.0J	D	B	72 / B
16"	205/50R16	87W	6.5J	D	B	71 / B	245/45ZR18 XL	100W	8.0J	D	B	72 / B	
	225/50R16	92W	7.0J	D	B	71 / B	225/50R18	95W	7.0J	D	B	71 / B	
	205/55R16 XL	94W	6.5J	D	B	72 / B	235/50R18 XL	101W	7.5J	D	B	72 / B	
	215/55R16 XL	97W	7.0J	D	B	72 / B	255/55R18 XL	109V	8.0J	D	B	73 / B	
	225/55R16 XL	99W	7.0J	D	B	72 / B	265/60R18	110V	8.0J	C	B	72 / B	
17"	205/40ZR17 XL	84W	7.5J	D	B	72 / B	19"	215/35ZR19 XL	85W	7.5J	D	B	72 / B
	215/40ZR17 XL	87W	7.5J	D	B	72 / B		225/35ZR19 XL	88W	8.0J	D	B	72 / B
	245/40ZR17 XL	95W	8.5J	D	B	72 / B		245/45ZR19 XL	102W	8.0J	D	B	72 / B
	205/45ZR17 XL	88W	7.0J	D	B	72 / B		255/45ZR19 XL	104W	8.5J	D	B	73 / B
	215/45ZR17 XL	91W	7.0J	D	B	72 / B		20"	275/40ZR20 XL	106W	9.5J	C	B
	225/45ZR17 XL	94W	7.5J	D	B	72 / B	255/45R20 XL		105V	8.5J	C	B	73 / B
	235/45ZR17 XL	97W	8.0J	D	B	72 / B	275/45R20 XL		110V	9.0J	C	B	73 / B
	205/50R17 XL	93W	6.5J	D	B	72 / B	265/50R20 XL		111V	8.5J	C	B	73 / B
	215/50R17 XL	95W	7.0J	D	B	72 / B	285/50R20		112V	9.0J	C	B	74 / B
	18"	225/50R17 XL	98W	7.0J	D	B	72 / B	275/55R20 XL	117V	8.5J	C	B	73 / B
215/55R17 XL		98W	7.0J	D	B	72 / B	275/60R20 XL	119V	8.0J	C	B	73 / B	
225/55R17 XL		101W	7.0J	D	B	72 / B	22"	265/35R22 XL	102V	9.5J	D	B	73 / B
235/55R17 XL		103W	7.5J	D	B	72 / B		285/35R22 XL	106V	10.0J	D	B	75 / B
265/35ZR18 XL		97W	9.5J	D	B	73 / B		265/40R22 XL	106V	9.5J	C	B	73 / B
225/40ZR18 XL		92W	8.0J	D	B	72 / B	305/40R22 XL	114V	11.0J	C	B	75 / B	
235/40ZR18 XL		95W	8.5J	D	B	72 / B	305/45R22 XL	118V	10.0J	C	B	75 / B	
245/40ZR18 XL	97W	8.5J	D	B	72 / B	24"	295/35R24 XL	110V	10.5J	C	B	75 / B	



SOLMAX 1^{SUV}



Benefits and Features

Variable-pitch noise-reduction pattern blocks, sound-bolts in 4 circumferential grooves, and the staggered arrangement of inner and outer lateral grooves to provide consumers with a more comfortable driving experience.

Hybrid Silane patent to optimize the tread compound and absorb road vibration effectively to further improved consumer's driving and experience

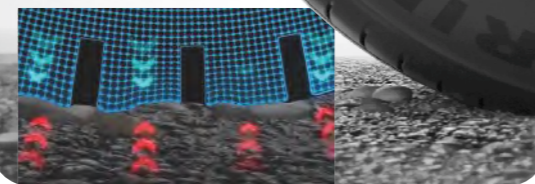
The patented Nanometer Mixing-Technology and High saturation pattern design, provide tires with better wear resistance and increased mileage.

Improved Durability

Nanometer Mixing-Technology™ for longer mileage

Driving Comfort

Hybrid Silane™ to optimize tread rubber compound
Soft Tread Compound and Minimized Vibration



Strong Grip

Hybrid Formula™- Super hybrid rubber compound / Fast water drainage and strong grip



BPOT Technology
(Improved Durability)



Hybrid Silane
(Driving Comfort)



Hybrid Formula
(Strong Grip)



Rim Size	17 - 22
Series	50 - 65
Speed Rating	H - V

SOLMAX 1^{SUV}

Rim (inch)	Size	Service Index	Standard Rim	Icons	Rim (inch)	Size	Service Index	Standard Rim	Icons	
17"	215/60R17	96V	6.5J	D C 71/B	18"	235/60R18 XL	107V	7.0J	C C 72/B	
	225/60R17 XL	103V	6.5J	C C 72/B		245/60R18	105H	7.0J	C C 71/B	
	255/60R17 XL	110V	7.5J	C C 73/B		265/60R18 XL	114V	8.0J	C C 73/B	
	215/65R17	99V	6.5J	C C 71/B		235/65R18	106H	7.0J	C C 71/B	
	225/65R17 XL	106V	6.5J	C C 72/B		19"	275/50R19 XL	112V	8.5J	C C 73/B
	235/65R17 XL	108V	7.0J	C C 72/B			235/60R19 XL	107V	7.0J	C C 72/B
	245/65R17	107H	7.0J	C C 71/B			255/60R19 XL	113V	7.5J	C C 73/B
18"	265/65R17	112H	8.0J	C C 72/B	235/65R19 XL	109V	7.0J	C C 72/B		
	275/65R17	115H	8.0J	C C 72/B	20"	275/55R20 XL	117V	8.5J	C C 73/B	
	285/65R17	116H	8.5J	C C 74/B		22"	275/50R22	111H	8.5J	C C 72/B
	225/60R18	100H	6.5J	D C 71/B						

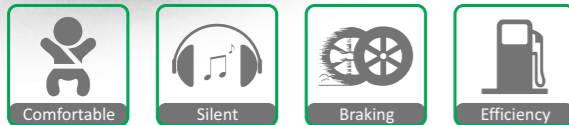
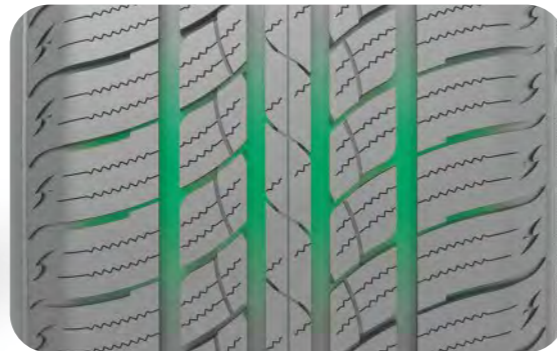


SU318 H/T



Benefits and Features

- Ideal H/T tyre integrated outstanding on-road comfort and wet traction safety as a whole
- Four longitude grooves combined with wind sipes ensure excellent water evacuation and wet traction performance
- SILICA TECH adopted for better wet grip as well as low rolling resistance
- Re-constructed steel bead wire improves driving comfort effectively



Rim Size	15 - 22
Series	35 - 75
Speed Rating	T - V

SU318 H/T

Rim (inch)	Size	Service Index	Standard Rim	Wet Grip	Rolling Resistance	Noise (dB)	Rim (inch)	Size	Service Index	Standard Rim	Wet Grip	Rolling Resistance	Noise (dB)
15"	225/70R15	100T	6.5J	D	C	71 / B	17"	215/65R17	99H	6.5J	D	C	71 / B
	235/70R15	103T	7.0J	D	C	71 / B		225/65R17 XL	106V	6.5J	D	C	72 / B
	265/70R15	112T	8.0J	C	C	72 / B		235/65R17 XL	108V	7.0J	D	C	72 / B
	215/75R15	100T	6.0J	D	C	71 / B		245/65R17	107H	7.0J	D	C	71 / B
	225/75R15	102H	6.0J	D	C	71 / B		255/65R17	110H	7.5J	C	C	72 / B
	235/75R15	105H	6.5J	D	C	71 / B		265/65R17	112T	8.0J	C	C	72 / B
16"	265/75R15	112T	7.5J	C	C	72 / B	275/65R17	115T	8.0J	C	C	72 / B	
	255/65R16	109H	7.5J	C	C	72 / B	285/65R17	116H	8.5J	C	C	74 / B	
	215/70R16	100H	6.5J	D	C	71 / B	245/70R17	110T	7.0J	D	C	71 / B	
	225/70R16	103H	6.5J	D	C	71 / B	255/70R17	112T	7.5J	C	C	72 / B	
	235/70R16	106H	7.0J	D	C	71 / B	265/70R17	115T	8.0J	C	C	72 / B	
	245/70R16 XL	111H	7.0J	D	C	72 / B	18"	235/50R18	97V	7.5J	D	C	71 / B
	255/70R16	111T	7.5J	C	C	72 / B		225/55R18	98V	7.0J	D	C	71 / B
	265/70R16	112H	8.0J	C	C	72 / B		235/55R18	100V	7.5J	D	C	71 / B
	275/70R16	114T	8.0J	C	C	72 / B		255/55R18 XL	109V	8.0J	C	C	73 / B
	225/75R16	104H	6.0J	D	C	71 / B	225/60R18	100V	6.5J	D	C	71 / B	
235/75R16	108T	6.5J	D	C	71 / B	235/60R18	103V	7.0J	D	C	71 / B		
245/75R16	111T	7.0J	D	C	71 / B	245/60R18	105T	7.0J	D	C	71 / B		
265/75R16	116T	7.5J	C	C	72 / B	255/60R18 XL	112V	7.5J	C	C	73 / B		
17"	215/60R17	96H	6.5J	D	C	71 / B	265/60R18 XL	114V	8.0J	C	C	73 / B	
	225/60R17 XL	103V	6.5J	D	C	72 / B	285/60R18	116H	8.5J	C	C	74 / B	
	235/60R17	102T	7.0J	D	C	71 / B	19"	275/45R19 XL	108V	9.0J	C	C	73 / B
	255/60R17 XL	110V	7.5J	C	C	73 / B		255/50R19 XL	107V	8.0J	C	C	73 / B
	265/60R17	108H	8.0J	C	C	72 / B	20"	275/40R20 XL	106V	9.5J	D	C	73 / B
	275/60R17	110T	8.0J	C	C	72 / B		275/55R20 XL	117V	8.5J	C	C	73 / B

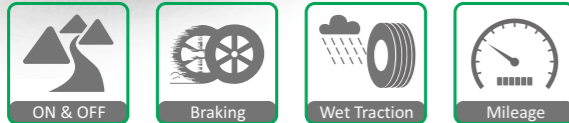


SL369 A/T



Benefits and Features

- Wide tread and multi-stepped grooves increase surface area of tread to enhance traction on both on and off roads
- Zig-zag grooves offers efficient water drainage and enhanced traction on wet road
- Large tread blocks help enhanced stability and handling with less noise on highway
- Aggressive sidewall protectors increase off-road bite and prevent damage from sidewall cut and abrasions



Rim Size	14 - 20
Series	45 - 85
Speed Rating	Q - V

SL369 A/T

Rim (inch)	Size	Service Index	Standard Rim	Icons	Rim (inch)	Size	Service Index	Standard Rim	Icons
15"	205/65R15	94H	6.0J	D D 71/B	17"	225/65R17	102T	6.5J	D D 71/B
	205/70R15	96H	6.0J	D D 71/B		235/65R17	104S	7.0J	D D 71/B
	225/70R15	100T	6.5J	D D 71/B		245/65R17	107S	7.0J	D D 71/B
	235/70R15	103S	7.0J	D D 71/B		255/65R17	110T	7.5J	D D 72/B
	265/70R15	112T	8.0J	D D 72/B		265/65R17	112S	8.0J	D D 72/B
	P215/75R15	100S	6.0J	D D 71/B		225/70R17 XL	108S	6.5J	D D 72/B
16"	235/75R15 XL	109S	6.5J	D D 72/B	245/70R17	110T	7.0J	D D 71/B	
	205/60R16	92H	6.0J	D D 71/B	255/70R17	112T	7.5J	D D 72/B	
	235/60R16	100T	7.0J	D D 71/B	265/70R17	115T	8.0J	D D 72/B	
	215/70R16	100S	6.5J	D D 71/B	285/70R17	117T	8.5J	D D 74/B	
	225/70R16	103S	6.5J	D D 71/B	235/75R17	109T	6.5J	D D 71/B	
	235/70R16	106S	7.0J	D D 71/B	245/75R17	112T	7.0J	D D 71/B	
	245/70R16 XL	111S	7.0J	D D 72/B	255/75R17	115T	7.0J	D D 72/B	
	255/70R16	111T	7.5J	D D 72/B	18"	265/60R18	110T	8.0J	D D 72/B
	265/70R16	112S	8.0J	D D 72/B		265/65R18	114T	8.0J	D D 72/B
	275/70R16	114S	8.0J	D D 72/B		275/65R18	116T	8.0J	D D 72/B
	225/75R16 XL	108S	6.0J	D D 72/B	20"	275/45R20 XL	110H	9.0J	D D 73/B
	235/75R16 XL	112S	6.5J	D D 72/B		265/50R20 XL	111T	8.5J	D D 73/B
245/75R16	111S	7.0J	D D 71/B	285/50R20 XL		116V	9.0J	D D 75/B	
265/75R16	116S	7.5J	D D 72/B	275/55R20		113S	8.5J	D D 72/B	
205/80R16 XL	104S	5.5J	D D 72/B	275/60R20		115T	8.0J	D D 72/B	
215/80R16 XL	107S	6.0J	D D 72/B						

Outline White Letters (OWL)

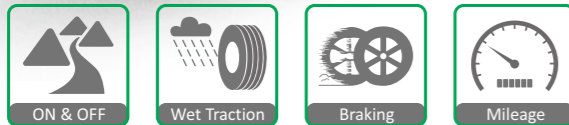
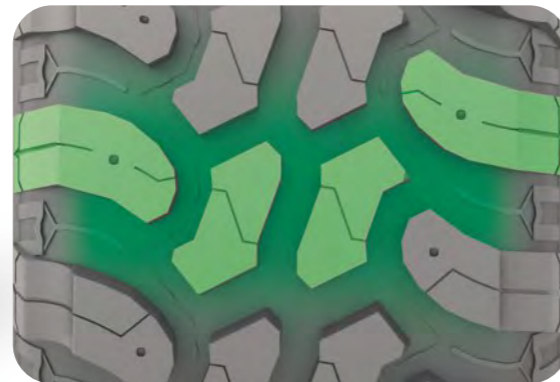


MUD LEGEND SL366



Benefits and Features

- Especially designed for unpaved tough roads (Professional off-road tyres)
- Various shoulder blocks promote driving and handling performance on tough roads
- Perfect grip on tough surfaces such as mud and sand



Rim Size	14 - 20
Series	50 - 85
Speed Rating	Q - T

MUD LEGEND SL366

Rim (inch)	Size	LR/PR	Service Index	Standard Rim	Icons	Rim (inch)	Size	LR/PR	Service Index	Standard Rim	Icons
14"	185R14C	D/8PR	102/100Q	5.5J	/ POR /	16"	205R16C	D/8PR	110/108Q	6.0J	/ POR /
	195R14C	D/8PR	106/104Q	5.5J	/ POR /		LT225/75R16	E/10PR	115/112Q	6.0J	/ POR /
15"	205/70R15C	C/6PR	104/102Q	6.0J	/ POR /	LT245/75R16	E/10PR	120/116Q	7.0J	/ POR /	
	30×9.50R15LT	C/6PR	104Q	7.5J	/ POR /	LT235/85R16	E/10PR	120/116Q	6.5J	/ POR /	
	31×10.50R15LT	C/6PR	109Q	8.5J	/ POR /	17"	35×12.50R17LT	E/10PR	121Q	10.0J	/ POR /
	32×11.50R15LT	C/6PR	113Q	9.0J	/ POR /		LT265/65R17	E/10PR	120/117Q	8.0J	/ POR /
	33×12.50R15LT	C/6PR	108Q	10.0J	/ POR /		LT245/70R17	E/10PR	119/116Q	7.0J	/ POR /
	35×12.50R15LT	C/6PR	113Q	10.0J	/ POR /		LT265/70R17	E/10PR	121/118Q	8.0J	/ POR /
LT215/75R15	C/6PR	100/97Q	6.0J	/ POR /	LT285/70R17	E/10PR	121/118Q	8.5J	/ POR /		
LT225/75R15	C/6PR	102/99Q	6.0J	/ POR /	LT315/70R17	E/10PR	121/118Q	9.5J	/ POR /		
LT235/75R15	C/6PR	104/101Q	6.5J	/ POR /	20"	33×12.50R20LT	E/10PR	114Q	10.0J	/ POR /	
LT235/75R15	D/8PR	110/107Q	6.5J	/ POR /		35×12.50R20LT	E/10PR	121Q	10.0J	/ POR /	

POR: Professional Off-Road



SC328



Benefits and Features

- Wide four ribs improve miles to tread life
- Zig-zag grooves offers enhanced traction on wet road
- Combination construction of polyester casing and steel belts provide outstanding durability



Rim Size	12 - 16
Series	60 - 75
Speed Rating	Q - T

SC328

Rim (inch)	Size	LR/PR	Service Index	Standard Rim	Efficiency	Mileage	Silica	Wet Traction	Rim (inch)	Size	LR/PR	Service Index	Standard Rim	Efficiency	Mileage	Silica	Wet Traction
14"	185R14C	D/8PR	102/100Q	5.5J	D	C	72 / B		16"	175R16C	C/6PR	98/96Q	5.0J	D	B	72 / B	
	195R14C	D/8PR	106/104Q	5.5J	D	C	72 / B			215/60R16C	D/8PR	108/106T	6.5J	D	B	72 / B	
	205R14C	D/8PR	109/107R	6.0J	D	C	72 / B			195/65R16C	D/8PR	104/102T	6.0J	D	B	72 / B	
	215R14C	D/8PR	112/110Q	6.0J	D	C	72 / B			205/65R16C	D/8PR	107/105T	6.0J	D	B	72 / B	
	205/70R14C	C/6PR	102/100R	6.0J	D	C	72 / B			215/65R16C	D/8PR	109/107R	6.5J	D	B	72 / B	
	215/75R14C	D/8PR	112/110Q	6.0J	D	C	72 / B		225/65R16C	D/8PR	112/110R	6.5J	C	B	72 / B		
15"	185R15C	D/8PR	103/102R	5.5J	D	C	72 / B		235/65R16C	D/8PR	115/113R	7.0J	C	B	72 / B		
	195R15C	D/8PR	106/104R	5.5J	D	C	72 / B		215/70R16C	C/6PR	108/106T	6.5J	D	C	72 / B		
	215R15C	D/8PR	112/110Q	6.0J	D	C	72 / B		175/75R16C	D/8PR	101/99Q	5.0J	D	B	72 / B		
	205/65R15C	C/6PR	102/100T	6.0J	D	C	72 / B		195/75R16C	D/8PR	107/105R	5.5J	D	B	72 / B		
	195/70R15C	D/8PR	104/102R	6.0J	D	C	72 / B		205/75R16C	D/8PR	110/108Q	5.5J	C	B	72 / B		
	205/70R15C	D/8PR	106/104R	6.0J	D	C	72 / B		215/75R16C	D/8PR	113/111Q	6.0J	C	B	72 / B		
	215/70R15C	D/8PR	109/107R	6.5J	D	C	72 / B										
	225/70R15C	D/8PR	112/110R	6.5J	D	C	72 / B										

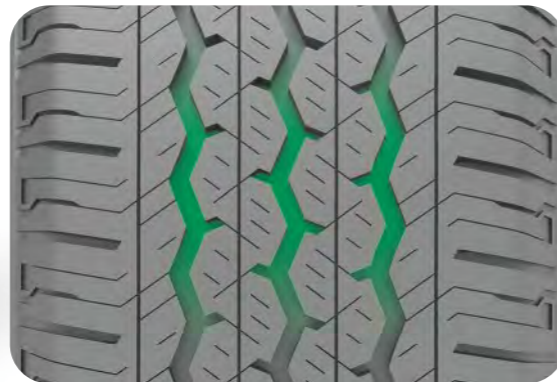


H188



Benefits and Features

- Valuable commercial light truck tyre for vehicles on paved roads
- 3 rib grooves provides improved handling and comfort
- Polyester tyre casing with steel belts for good durability



Rim Size	12 - 16
Series	60 - 75
Speed Rating	Q - H

H188

Rim (inch)	Size	LR/PR	Service Index	Standard Rim					Rim (inch)	Size	LR/PR	Service Index	Standard Rim				
12"	155R12C	C/6PR	83/81Q	4.5B	D	C	C	72 / B	16"	195/60R16C	C/6PR	99/97H	6.0J	C	C	C	72 / B
13"	155R13C	D/8PR	90/88S	4.5B	D	C	C	72 / B	215/60R16C	D/8PR	108/106T	6.5J	C	C	C	C	72 / B
	165R13C	C/6PR	91/89S	4.5B	D	C	C	72 / B	195/65R16C	D/8PR	104/102T	6.0J	C	C	C	C	72 / B
	165/70R13C	C/6PR	88/86S	5.0J	D	C	C	72 / B	205/65R16C	D/8PR	107/105T	6.0J	C	C	C	C	72 / B
14"	185R14C	D/8PR	102/100R	5.5J	D	C	C	72 / B	215/65R16C	D/8PR	109/107T	6.5J	C	C	C	C	72 / B
	195R14C	D/8PR	106/104Q	5.5J	D	C	C	72 / B	225/65R16C	D/8PR	112/110T	6.5J	C	C	C	C	72 / B
	175/70R14C	C/6PR	95/93S	5.0J	D	C	C	72 / B	235/65R16C	D/8PR	115/113R	7.0J	C	C	C	C	72 / B
15"	195R15C	D/8PR	106/104R	5.5J	C	C	C	72 / B	185/75R16C	D/8PR	104/102R	5.0J	C	C	C	C	72 / B
	205/65R15C	C/6PR	102/100T	6.0J	C	C	C	72 / B	195/75R16C	D/8PR	107/105R	5.5J	C	C	C	C	72 / B
	215/65R15C	C/6PR	104/102T	6.5J	C	C	C	72 / B	205/75R16C	D/8PR	110/108Q	5.5J	C	C	C	C	72 / B
	195/70R15C	D/8PR	104/102R	6.0J	C	C	C	72 / B	215/75R16C	D/8PR	113/111Q	6.0J	C	C	C	C	72 / B
	205/70R15C	D/8PR	106/104R	6.0J	C	C	C	72 / B	225/75R16C	E/10PR	118/116R	6.0J	C	C	C	C	72 / B
	215/70R15C	D/8PR	109/107R	6.5J	C	C	C	72 / B									
	225/70R15C	D/8PR	112/110R	6.5J	C	C	C	72 / B									

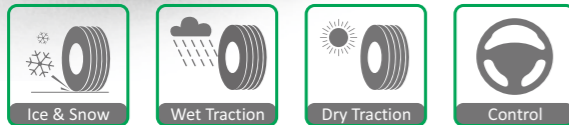


ALL Season Elite Z-401



Benefits and Features

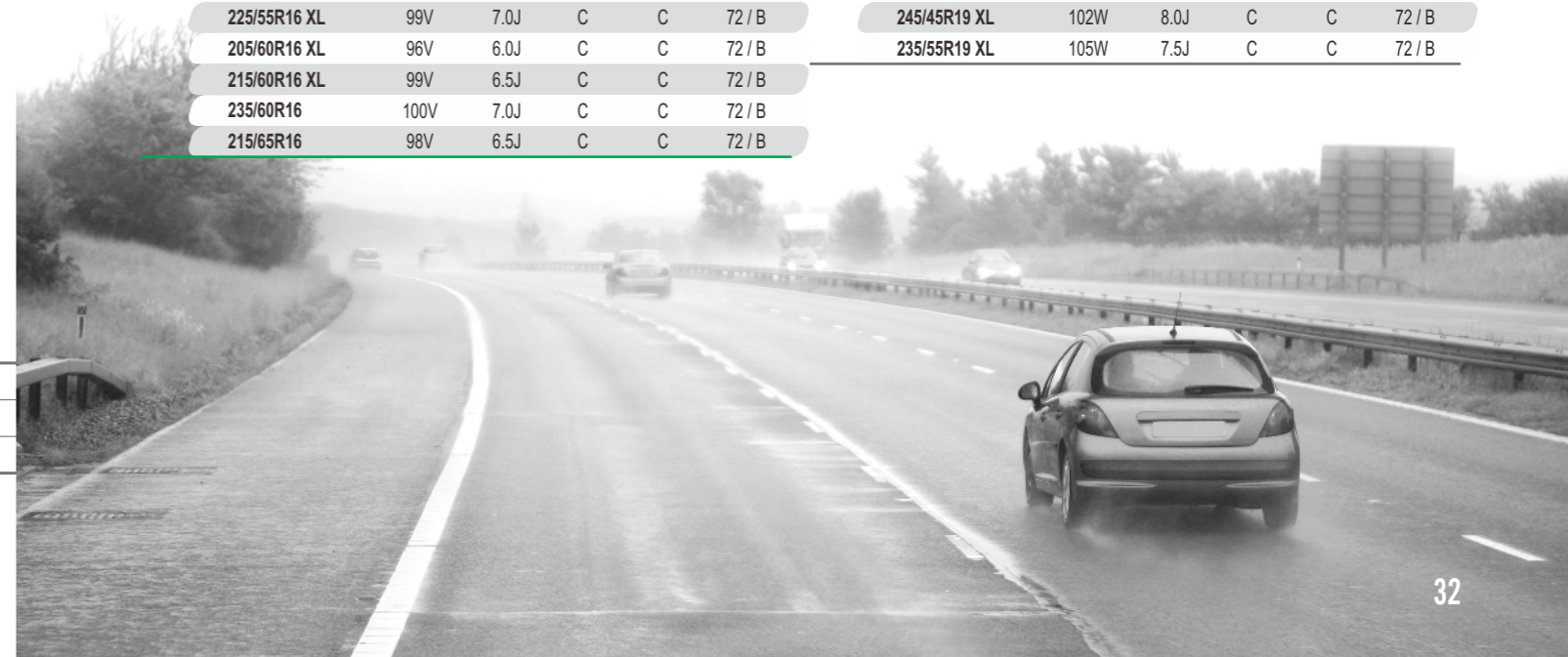
- Divergent V-Groove provides excellent snow and water drainage performance
- ZC-Rubber's special all season tread compound ensures the longer mileage
- logical kerfs design delivers outstanding traction performance on both snow and wet surface



Rim Size	13 - 19
Series	40 - 80
Speed Rating	T - W

ALL Season Elite Z-401

Rim (inch)	Size	Service Index	Standard Rim	Icons	Rim (inch)	Size	Service Index	Standard Rim	Icons	
13"	155/70R13	75T	4.5B	D C 71/B	17"	215/40R17 XL	87W	7.5J	D C 72/B	
	155/80R13	79T	4.5B	D C 71/B		205/45R17 XL	88V	7.0J	D C 72/B	
14"	185/55R14	80H	6.0J	D C 71/B	215/45R17 XL	91W	7.0J	C C 72/B		
	165/60R14 XL	79H	5.0J	D C 71/B	225/45R17 XL	94W	7.5J	C C 72/B		
	185/60R14	82H	5.5J	D C 71/B	235/45R17 XL	97W	8.0J	C C 72/B		
	155/65R14	75T	4.5J	D C 71/B	245/45R17 XL	99W	8.0J	C C 72/B		
	165/65R14	79T	5.0J	D C 71/B	205/50R17 XL	93V	6.5J	C C 72/B		
	175/65R14	82T	5.0J	D C 71/B	215/50R17 XL	95W	7.0J	C C 72/B		
	185/65R14	86H	5.5J	D C 71/B	225/50R17 XL	98W	7.0J	C C 72/B		
	165/70R14	81T	5.0J	D C 71/B	205/55R17 XL	95V	6.5J	C C 72/B		
15"	175/70R14 XL	88T	5.0J	C C 71/B	215/55R17 XL	98V	7.0J	C C 72/B		
	195/50R15	82V	6.0J	D C 72/B	225/55R17 XL	101W	7.0J	C C 72/B		
	185/55R15	82H	6.0J	D C 71/B	235/55R17 XL	103W	7.5J	C C 72/B		
	195/55R15 XL	89V	6.0J	D C 72/B	215/60R17	96H	6.5J	C C 72/B		
	155/60R15	74T	4.5J	D C 71/B	225/60R17	99V	6.5J	C C 72/B		
	185/60R15 XL	88H	5.5J	C C 71/B	235/60R17	102V	7.0J	C C 72/B		
	165/65R15	88V	6.0J	D C 72/B	215/65R17	99V	6.5J	C C 72/B		
	165/65R15	81T	5.0J	D C 71/B	18"	225/40R18 XL	92W	8.0J	D C 72/B	
	175/65R15	84H	5.0J	D C 71/B		245/40R18 XL	97W	8.5J	C C 72/B	
	185/65R15 XL	92H	5.5J	C C 71/B		215/45R18 XL	93W	7.0J	C C 72/B	
	195/65R15	91V	6.0J	C C 72/B		225/45R18 XL	95W	7.5J	C C 72/B	
	195/65R15 XL	95H	6.0J	C C 72/B		235/45R18 XL	98W	8.0J	C C 72/B	
	215/65R15	96H	6.5J	D C 72/B		245/45R18 XL	100W	8.0J	C C 72/B	
	16"	195/45R16 XL	84V	6.5J		D C 72/B	225/50R18	95W	7.0J	C C 72/B
		205/45R16 XL	87W	7.0J		D C 72/B	235/50R18 XL	101W	7.5J	C C 72/B
		215/45R16 XL	90V	7.0J	D C 72/B	215/55R18 XL	99V	7.0J	D C 72/B	
185/55R16 XI		87H	6.0J	C C 71/B	225/55R18	98V	7.0J	C C 72/B		
195/55R16 XL		91V	6.0J	C C 72/B	235/55R18	100V	7.5J	C C 72/B		
205/55R16		91V	6.5J	C C 72/B	235/60R18 XL	107V	7.0J	C C 72/B		
205/55R16 XL		94V	6.5J	C C 72/B	19"	225/40R19 XL	93W	8.0J	D C 72/B	
215/55R16 XL		97V	7.0J	C C 72/B		245/40R19 XL	98W	8.5J	C C 72/B	
225/55R16 XL		99V	7.0J	C C 72/B		245/45R19 XL	102W	8.0J	C C 72/B	
205/60R16 XL		96V	6.0J	C C 72/B		235/55R19 XL	105W	7.5J	C C 72/B	
215/60R16 XL		99V	6.5J	C C 72/B						
235/60R16		100V	7.0J	C C 72/B						
215/65R16	98V	6.5J	C C 72/B							

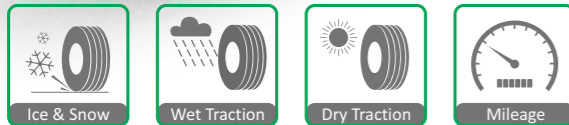
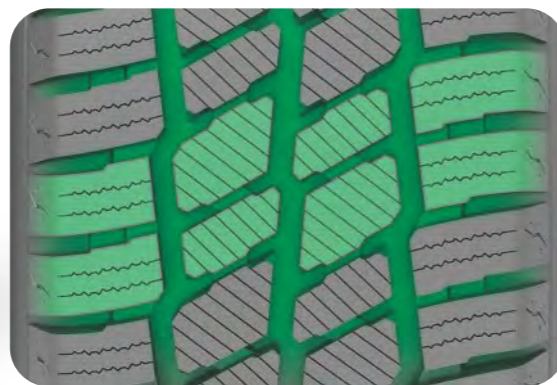


ALL Season Master SW613



Benefits and Features

- Premium commercial tyre for all season usage
- Remarkable safety through excellent grip, handling and traction in snow, mud and wet surface
- Comfortable ride and precise handling with long tread life



Rim Size	15 - 16
Series	60 - 75
Speed Rating	Q - T

ALL Season Master SW613

Rim (inch)	Size	Service Index	Standard Rim	Wet Traction	Dry Traction	Noise (dB)	Rim (inch)	Size	Service Index	Standard Rim	Wet Traction	Dry Traction	Noise (dB)
15"	195/70R15C	104/102R	6.0J	D	C	72 / B	16"	215/65R16C	109/107R	6.5J	D	C	72 / B
	205/70R15C	106/104R	6.0J	D	C	72 / B		225/65R16C	112/110R	6.5J	D	C	72 / B
	215/70R15C	109/107R	6.5J	D	C	72 / B		235/65R16C	115/113R	7.0J	D	C	72 / B
	225/70R15C	112/110R	6.5J	D	C	72 / B		185/75R16C	104/102Q	5.0J	E	C	72 / B
16"	195/60R16C	99/97T	6.0J	E	C	72 / B	195/75R16C	107/105R	5.5J	D	C	72 / B	
	195/65R16C	104/102T	6.0J	D	C	72 / B	205/75R16C	110/108Q	5.5J	D	C	72 / B	
	205/65R16C	107/105T	6.0J	D	C	72 / B	215/75R16C	113/111Q	6.0J	D	C	72 / B	

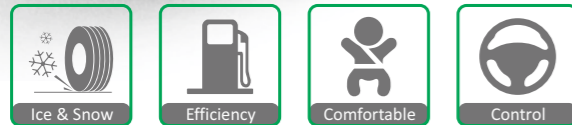
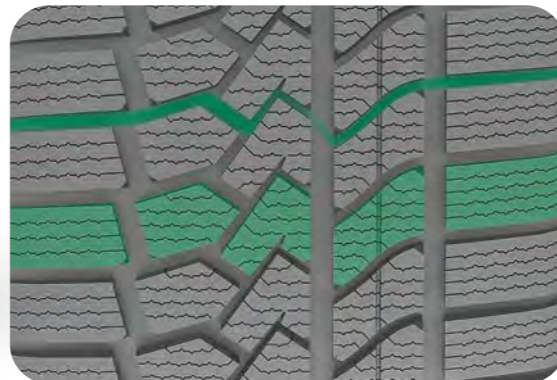


Zuper Snow Z-507



Benefits and Features

- Asymmetric pattern design provides superior handling on snow surface
- Optimised lateral groove angle offers strong snow performance
- Special zigzag traction sipes improves traction and braking performance on snow roads



Rim Size	16 - 20
Series	35 - 70
Speed Rating	H - V

Zuper Snow Z-507

Rim (inch)	Size	Service Index	Standard Rim	Rolling Noise (dB)	Rolling Noise (dB)	Rolling Noise (dB)	Rim (inch)	Size	Service Index	Standard Rim	Rolling Noise (dB)	Rolling Noise (dB)	Rolling Noise (dB)
16"	195/45R16 XL	84V	6.5J	D	C	72 / B	18"	245/40R18 XL	97V	8.5J	C	C	72 / B
	215/45R16	90V	7.0J	C	C	72 / B		255/40R18 XL	99V	9.0J	C	C	73 / B
	205/55R16	91V	6.5J	C	C	72 / B		225/45R18 XL	95V	7.5J	C	C	72 / B
	215/55R16 XL	97H	7.0J	C	C	72 / B		235/45R18 XL	98V	8.0J	C	C	72 / B
	225/55R16 XL	99V	7.0J	C	C	72 / B		245/45R18 XL	100V	8.0J	C	C	72 / B
	205/60R16	92H	6.0J	C	C	72 / B		255/45R18 XL	103V	8.5J	C	C	73 / B
	215/60R16 XL	99H	6.5J	C	C	72 / B		225/50R18 XL	99V	7.0J	C	C	72 / B
	225/60R16	98H	6.5J	C	C	72 / B		235/50R18 XL	101V	7.5J	C	C	72 / B
	215/65R16	98H	6.5J	C	C	72 / B		245/50R18 XL	104V	7.5J	C	C	72 / B
	17"	215/45R17 XL	91V	7.0J	C	C		72 / B	215/55R18 XL	99V	7.0J	C	C
225/45R17 XL		94V	7.5J	C	C	72 / B	225/55R18 XL	102V	7.0J	C	C	72 / B	
235/45R17 XL		97V	8.0J	C	C	72 / B	225/60R18 XL	104V	6.5J	C	C	72 / B	
245/45R17 XL		99V	8.0J	C	C	72 / B	19"	225/35R19 XL	88V	8.0J	C	C	72 / B
205/50R17 XL		93V	6.5J	C	C	72 / B		255/35R19 XL	96V	9.0J	C	C	73 / B
215/50R17 XL		95V	7.0J	C	C	72 / B		225/40R19 XL	93V	8.0J	C	C	72 / B
225/50R17 XL		98V	7.0J	C	C	72 / B		235/40R19 XL	96V	8.5J	C	C	72 / B
215/55R17 XL		98V	7.0J	C	C	72 / B		245/40R19 XL	98V	8.5J	C	C	72 / B
225/55R17 XL		101V	7.0J	C	C	72 / B		255/40R19 XL	100V	9.0J	C	C	73 / B
235/55R17 XL		103V	7.5J	C	C	72 / B		275/40R19 XL	105V	9.5J	C	C	73 / B
215/60R17 XL	100V	6.5J	C	C	72 / B	235/45R19 XL		99V	8.0J	C	C	72 / B	
225/60R17 XL	103V	6.5J	C	C	72 / B	245/45R19 XL		102V	8.0J	C	C	72 / B	
18"	225/40R18 XL	92V	8.0J	C	C	72 / B		235/50R19 XL	103V	7.5J	C	C	72 / B
	235/40R18 XL	95V	8.5J	C	C	72 / B	235/55R19 XL	105V	7.5J	C	C	72 / B	

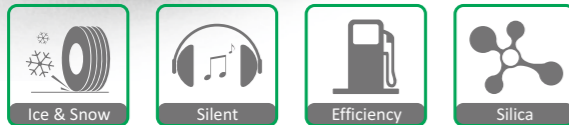


SW608



Benefits and Features

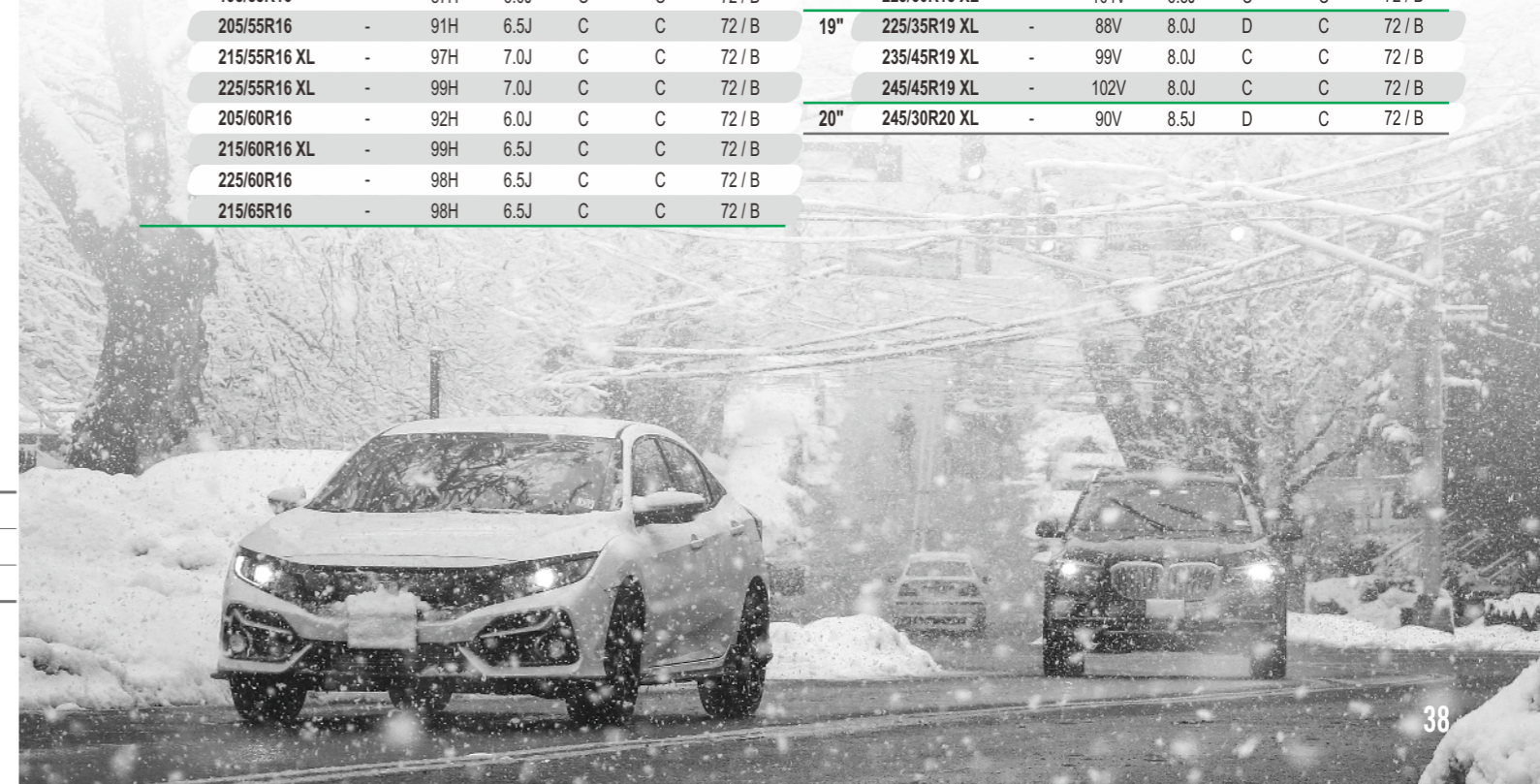
- V-shaped tread design works with high-drainage groove to drain snow, slush and water quickly
- Optimized direction of sipes maximize the tyre's contact with the road surface and delivers outstanding traction and control in all winter driving conditions
- Special winter tread compound offers performance driving



Rim Size	13 - 20
Series	30 - 80
Speed Rating	Q - V

SW608

Rim (inch)	Size	LR/PR	Service Index	Standard Rim	Icons	Rim (inch)	Size	LR/PR	Service Index	Standard Rim	Icons		
13"	155/70R13	-	75T	4.5B	D C	71 / B	17"	205/40R17 XL	-	84V	7.5J	D C	72 / B
	165/70R13	-	79T	5.0B	D C	71 / B		215/40R17 XL	-	87V	7.5J	D C	72 / B
	175/70R13	-	82T	5.0B	D C	71 / B		245/40R17 XL	-	95V	8.5J	C C	72 / B
	155/80R13	-	79T	4.5B	E C	71 / B		205/45R17 XL	-	88V	7.0J	D C	72 / B
14"	185R14C	D/8PR	102/100Q	5.5J	D C	73 / B		215/45R17 XL	-	91V	7.0J	D C	72 / B
	185/60R14	-	82H	5.5J	D C	71 / B		225/45R17 XL	-	94V	7.5J	C C	72 / B
	195/60R14	-	86H	6.0J	C C	72 / B		235/45R17 XL	-	97H	8.0J	C C	72 / B
	155/65R14	-	75T	4.5B	D C	71 / B		245/45R17 XL	-	99V	8.0J	D C	72 / B
	175/65R14	-	82H	5.0J	D C	71 / B		205/50R17 XL	-	93H	6.5J	C C	72 / B
	185/65R14	-	86H	5.5J	C C	71 / B		215/50R17 XL	-	95V	7.0J	C C	72 / B
	165/70R14	-	81T	5.0J	D C	71 / B		225/50R17 XL	-	98H	7.0J	C C	72 / B
	175/70R14	-	84T	5.0J	D C	71 / B		215/55R17 XL	-	98V	7.0J	C C	72 / B
15"	185/70R14	-	88T	5.5J	D C	71 / B		225/55R17 XL	-	101V	7.0J	C C	72 / B
	195/70R14	-	91T	6.0J	C C	72 / B		235/55R17 XL	-	103V	7.5J	C C	72 / B
	195/70R15C	D/8PR	104/102R	6.0J	D C	73 / B		215/60R17	-	96H	6.5J	C C	72 / B
	185/55R15 XL	-	86HV	6.0J	D C	71 / B		225/60R17	-	99H	6.5J	C C	72 / B
	195/55R15 XL	-	89H	6.0J	C C	72 / B	235/65R17 XL	-	108H	7.0J	C C	72 / B	
	185/60R15 XL	-	88H	5.5J	D C	71 / B	18"	225/40R18 XL	-	92V	8.0J	D C	72 / B
	195/60R15	-	88H	6.0J	D C	72 / B		235/40R18 XL	-	95V	8.5J	D C	72 / B
	175/65R15	-	84T	5.0J	D C	71 / B		245/40R18 XL	-	97V	8.5J	C C	72 / B
	185/65R15	-	88H	5.5J	C C	71 / B		225/45R18 XL	-	95V	7.5J	D C	72 / B
	195/65R15	-	91H	6.0J	D C	72 / B		235/45R18 XL	-	98V	8.0J	C C	72 / B
205/65R15	-	94H	6.0J	C C	72 / B	245/45R18 XL		-	100V	8.0J	D C	72 / B	
215/70R15	-	98H	6.5J	D C	72 / B	225/50R18 XL		-	99V	7.0J	C C	72 / B	
16"	195/50R16 XL	-	88H	6.0J	C C	72 / B		235/50R18 XL	-	101V	7.5J	C C	72 / B
	225/50R16 XL	-	96V	7.0J	C C	72 / B		245/50R18 XL	-	104V	7.5J	C C	72 / B
	195/55R16	-	87H	6.0J	C C	72 / B		225/60R18 XL	-	104V	6.5J	C C	72 / B
	205/55R16	-	91H	6.5J	C C	72 / B	19"	225/35R19 XL	-	88V	8.0J	D C	72 / B
	215/55R16 XL	-	97H	7.0J	C C	72 / B		235/45R19 XL	-	99V	8.0J	C C	72 / B
	225/55R16 XL	-	99H	7.0J	C C	72 / B		245/45R19 XL	-	102V	8.0J	C C	72 / B
	205/60R16	-	92H	6.0J	C C	72 / B		20"	245/30R20 XL	-	90V	8.5J	D C
	215/60R16 XL	-	99H	6.5J	C C	72 / B							
	225/60R16	-	98H	6.5J	C C	72 / B							
	215/65R16	-	98H	6.5J	C C	72 / B							

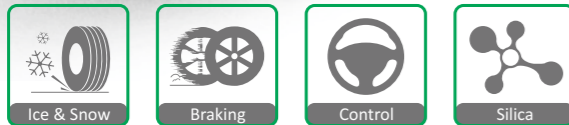
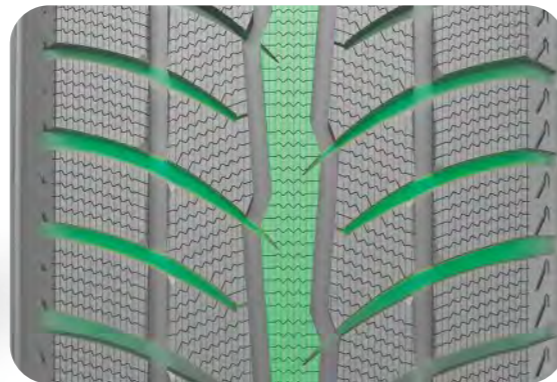


SW658



Benefits and Features

- New studless winter tyres for SUV/CUV vehicles promise excellent performance on snow and wet road surface
- Special V-shape pattern with solid center rib guarantees outstanding traction on snow, slush and wet road.
- SILICA TECH compound offers remarkable traction and longer tread life



Rim Size	15 - 19
Series	45 - 75
Speed Rating	T - V

SW658

Rim (inch)	Size	Service Index	Standard Rim	Icons	Rim (inch)	Size	Service Index	Standard Rim	Icons
15"	215/75R15	100T	6.0J	E C 72/B	17"	225/60R17	99T	6.5J	D C 72/B
	225/75R15	102T	6.0J	D C 72/B		225/65R17	102T	6.5J	D C 72/B
	235/75R15	105T	6.5J	D C 72/B		235/65R17	104T	7.0J	D C 72/B
16"	235/60R16	100H	7.0J	D C 72/B	245/65R17	107T	7.0J	D C 72/B	
	215/65R16	98T	6.5J	E C 72/B	265/65R17	112T	8.0J	D C 73/B	
	215/70R16	100T	6.5J	D C 72/B	265/70R17	115T	8.0J	D C 73/B	
	225/70R16	103T	6.5J	D C 72/B	18"	235/55R18 XL	104H	7.5J	D C 72/B
	235/70R16	106T	7.0J	D C 72/B		255/55R18 XL	109H	8.0J	C C 73/B
	245/70R16	107T	7.0J	D C 72/B		225/60R18 XL	104V	6.5J	D C 72/B
17"	265/70R16	112T	8.0J	D C 73/B	235/60R18 XL	107T	7.0J	D C 72/B	
	225/45R17	91H	7.5J	E C 72/B	285/60R18	116T	8.5J	C C 74/B	
	215/60R17	96T	6.5J	D C 72/B	19"	255/50R19 XL	107H	8.0J	D C 73/B

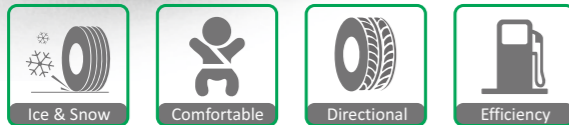
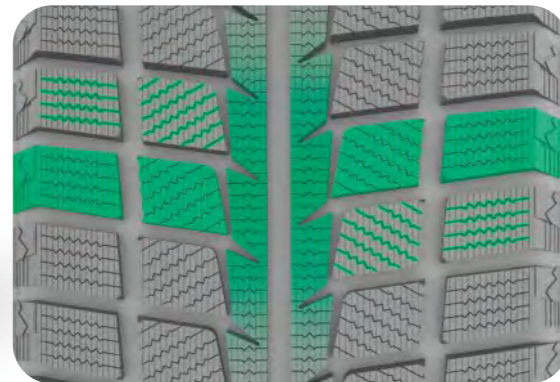


SW618



Benefits and Features

- Premium studless winter tyre providing excellent snow, slush and wet traction in cold climates
- Special pattern design to promote aggressive bite in deep snow and wet road conditions
- Superior tread compound keeps rubber flexible for maximum performance in extreme cold temperatures in winter



Rim Size	13 - 20
Series	30 - 70
Speed Rating	T - V

SW618

Rim (inch)	Size	Service Index	Standard Rim	Icons	Rim (inch)	Size	Service Index	Standard Rim	Icons
13"	155/65R13	73T	4.5J	E E 71/B	16"	205/65R16	95T	6.0J	D E 72/B
	165/65R13	77T	5.0J	E E 71/B		215/65R16	98T	6.5J	D E 72/B
	165/70R13	79T	5.0J	E E 71/B		225/65R16	100T	6.5J	D E 72/B
	175/70R13	82T	5.0J	E E 71/B		17"	215/45R17 XL	91V	7.0J
14"	165/60R14	75T	5.0J	E E 71/B	235/45R17 XL		97T	8.0J	D E 72/B
	185/60R14	82T	5.5J	E E 71/B	215/50R17 XL		95H	7.0J	D E 72/B
	155/65R14	75T	4.5B	E E 71/B	225/50R17		94T	7.0J	D E 72/B
	175/65R14	82T	5.0J	E E 71/B	235/50R17 XL	100H	7.5J	D E 72/B	
	185/65R14	86T	5.5J	E E 71/B	215/55R17	94T	7.0J	D E 72/B	
	165/70R14	81T	5.0J	D E 71/B	225/55R17 XL	101H	7.0J	D E 72/B	
	175/70R14	84T	5.0J	E E 71/B	235/55R17	99T	7.5J	D E 72/B	
	185/70R14	88T	5.5J	E E 71/B	225/60R17	99T	6.5J	D E 72/B	
195/70R14	91T	6.0J	D E 72/B	225/65R17	102T	6.5J	D E 72/B		
15"	195/50R15	82T	6.0J	E E 72/B	235/65R17	104T	7.0J	D E 72/B	
	185/55R15	82T	6.0J	E E 71/B	18"	235/40R18 XL	95V	8.5J	D E 72/B
	195/55R15	85H	6.0J	E E 72/B		225/45R18 XL	95H	7.5J	D E 72/B
	185/60R15	84T	5.5J	E E 71/B		235/45R18 XL	98T	8.0J	D E 72/B
	195/60R15	88T	6.0J	D E 72/B		245/45R18 XL	100T	8.0J	D E 72/B
	185/65R15	88T	5.5J	D E 71/B	235/50R18 XL	101T	7.5J	D E 72/B	
	195/65R15	91T	6.0J	D E 72/B	245/50R18 XL	104T	7.5J	D E 72/B	
	205/65R15	94T	6.0J	D E 72/B	215/55R18 XL	99H	7.0J	D E 72/B	
	205/70R15	96T	6.0J	D E 72/B	225/55R18	98H	7.0J	D E 72/B	
	215/70R15	98T	6.5J	D E 72/B	235/55R18 XL	104T	7.5J	D E 72/B	
16"	195/55R16 XL	91V	6.0J	D E 72/B	245/60R18	105H	7.0J	D E 72/B	
	205/55R16	91H	6.5J	D E 72/B	19"	235/50R19	99H	7.5J	D E 72/B
	215/55R16	93T	7.0J	D E 72/B		235/55R19 XL	105H	7.5J	D E 72/B
	225/55R16	95T	7.0J	D E 72/B		255/55R19 XL	111H	8.0J	D E 73/B
	195/60R16	89T	6.0J	D E 72/B		20"	275/30R20 XL	97H	9.5J
	205/60R16	92T	6.0J	D E 72/B	275/45R20 XL		110H	9.0J	D E 73/B
215/60R16	95T	6.5J	D E 72/B	255/50R20 XL	109H		8.0J	D E 73/B	
225/60R16	98T	6.5J	D E 72/B						

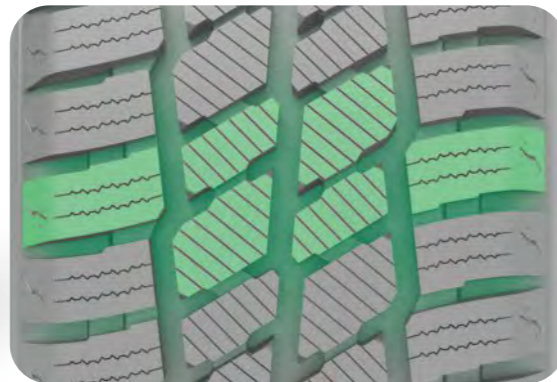


SW612



Benefits and Features

- All-round winter performance for vans and other commercial vehicles
- Remarkable safety through excellent grip, handling and traction in snow, mud and wet surface
- Comfortable ride and precise handling with long tread life



Rim Size	12 - 16
Series	60 - 75
Speed Rating	N - T

SW612

Rim (inch)	Size	LR/PR	Service Index	Standard Rim	Icons	Rim (inch)	Size	LR/PR	Service Index	Standard Rim	Icons
12"	155R12C	D/8PR	88/86Q	4.5B	E C 72/B	16"	7.00R16	F/12PR	117/116N	5.5F	D C 72/B
13"	155R13C	C/6PR	85/83Q	4.5J	D C 72/B		195/60R16C	C/6PR	99/97T	6.0J	E C 72/B
	165R13C	C/6PR	91/89Q	4.5B	E C 72/B		195/65R16C	D/8PR	104/102T	6.0J	D C 72/B
	175R13C	D/8PR	97/95Q	5.0B	D C 72/B		205/65R16C	D/8PR	107/105T	6.0J	D C 72/B
14"	185R14C	D/8PR	102/100R	5.5J	D C 72/B		215/65R16C	D/8PR	109/107R	6.5J	D C 72/B
	175/70R14C	C/6PR	95/93Q	5.0J	E C 72/B		225/65R16C	D/8PR	112/110R	6.5J	D C 72/B
15"	195R15C	D/8PR	106/104R	5.5J	D C 72/B		235/65R16C	D/8PR	115/113R	7.0J	D C 72/B
	205/65R15C	C/6PR	102/100T	6.0J	D C 72/B		185/75R16C	D/8PR	104/102Q	5.0J	E C 72/B
	195/70R15C	D/8PR	104/102R	6.0J	D C 72/B		195/75R16C	D/8PR	107/105R	5.5J	D C 72/B
	205/70R15C	D/8PR	106/104R	6.0J	D C 72/B		205/75R16C	D/8PR	110/108Q	5.5J	D C 72/B
	215/70R15C	D/8PR	109/107R	6.5J	D C 72/B		215/75R16C	D/8PR	113/111Q	6.0J	D C 72/B
	225/70R15C	D/8PR	112/110R	6.5J	D C 72/B		225/75R16C	E/10PR	118/116Q	6.0J	D C 72/B
16"	6.50R16	E/10PR	108/107N	5.5F	D C 72/B						

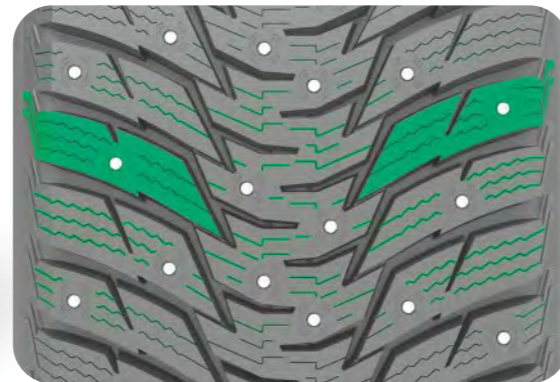


IceMaster Spike Z-506



Benefits and Features

- Studable V-shaped tread design delivers outstanding traction and braking performance on snow and icy roads
- Stiff shoulder blocks deliver outstanding cornering stability and enhanced grips



Rim Size	14 - 19
Series	40 - 65
Speed Rating	T - H

IceMaster Spike Z-506

Rim (inch)	Size	Service Index	Standard Rim	Icons	Rim (inch)	Size	Service Index	Standard Rim	Icons
14"	175/65R14 XL	86T	5.0J	/ / /	16"	205/65R16	95T	6.0J	/ / /
	185/65R14	86T	5.5J	/ / /		215/65R16	98T	6.5J	/ / /
15"	195/50R15	82T	6.0J	/ / /	17"	225/45R17 XL	94H	7.5J	/ / /
	195/55R15	85T	6.0J	/ / /		235/45R17 XL	97T	8.0J	/ / /
	195/60R15	88T	6.0J	/ / /		245/45R17 XL	99T	8.0J	/ / /
	185/65R15 XL	92T	5.5J	/ / /		225/50R17 XL	98H	7.0J	/ / /
	195/65R15 XL	95T	6.0J	/ / /		215/55R17 XL	98T	7.0J	/ / /
	205/65R15	94T	6.0J	/ / /		225/55R17 XL	101T	7.0J	/ / /
16"	225/75R15	102T	6.0J	/ / /	215/60R17	96T	6.5J	/ / /	
	235/75R15	105T	6.5J	/ / /	225/65R17	102T	6.5J	/ / /	
	205/50R16	87T	6.5J	/ / /	235/65R17	104T	7.0J	/ / /	
	195/55R16	87T	6.0J	/ / /	18"	225/40R18 XL	92T	8.0J	/ / /
	205/55R16 XL	94T	6.5J	/ / /		235/40R18 XL	95T	8.5J	/ / /
	215/55R16 XL	97T	7.0J	/ / /		245/40R18 XL	97T	8.5J	/ / /
	225/55R16	95T	7.0J	/ / /	235/45R18 XL	98T	8.0J	/ / /	
	205/60R16 XL	96T	6.0J	/ / /	19"	255/50R19 XL	107T	8.0J	/ / /
215/60R16	95T	6.5J	/ / /						

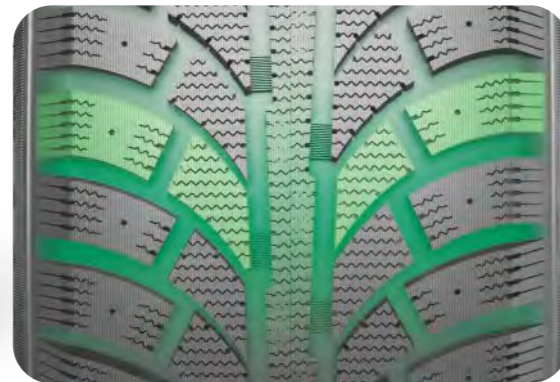


SW606



Benefits and Features

- Studable V-shaped tread design delivers outstanding traction and braking performance on snow and icy roads
- Stiff shoulder blocks deliver outstanding cornering stability and enhanced grips



Rim Size	14 - 20
Series	40 - 85
Speed Rating	Q - H

SW606

Rim (inch)	Size	LR/PR	Service Index	Standard Rim	Icons	Rim (inch)	Size	LR/PR	Service Index	Standard Rim	Icons
14"	185/60R14	-	82T	6.0J	/ / /	17"	LT265/70R17	E/10PR	121/118Q	6.5J	/ / /
	175/65R14	-	82H	6.5J	/ / /		LT285/70R17	E/10PR	121/118Q	6.5J	/ / /
	185/65R14	-	86T	5.0J	/ / /		LT245/75R17	E/10PR	121/118Q	6.5J	/ / /
	185/70R14	-	88T	6.0J	/ / /		LT235/80R17	E/10PR	120/117Q	7.0J	/ / /
	195/70R14	-	91T	7.0J	/ / /		215/45R17 XL	-	91H	7.0J	/ / /
15"	195/70R15C	D/8PR	104/102R	7.5J	/ / /	225/45R17 XL	-	94H	8.0J	/ / /	
	225/70R15C	D/8PR	112/110R	6.5J	/ / /	205/50R17 XL	-	93H	7.0J	/ / /	
	185/60R15	-	84T	7.0J	/ / /	215/50R17 XL	-	95H	7.5J	/ / /	
	195/60R15	-	88T	8.0J	/ / /	225/50R17 XL	-	98H	6.5J	/ / /	
	185/65R15	-	88T	8.5J	/ / /	225/55R17 XL	-	101H	7.0J	/ / /	
	195/65R15	-	91T	7.0J	/ / /	225/60R17	-	99T	7.0J	/ / /	
	205/65R15	-	94T	6.5J	/ / /	225/65R17	-	102T	7.0J	/ / /	
	215/70R15	-	98T	8.0J	/ / /	235/65R17	-	104T	6.5J	/ / /	
16"	185/75R16C	D/8PR	104/102R	8.0J	/ / /	245/65R17	-	107T	6.5J	/ / /	
	LT225/75R16	E/10PR	115/112Q	5.5J	/ / /	245/70R17	-	110T	7.0J	/ / /	
	LT245/75R16	E/10PR	120/116Q	5.0J	/ / /	265/70R17	-	115T	7.0J	/ / /	
	LT265/75R16	E/10PR	123/120Q	5.5J	/ / /	18"	LT275/65R18	E/10PR	123/120Q	7.0J	/ / /
	LT235/85R16	E/10PR	120/116Q	5.5J	/ / /		LT275/70R18	E/10PR	125/122Q	8.0J	/ / /
	205/55R16	-	91T	6.0J	/ / /		225/40R18 XL	-	92H	8.0J	/ / /
	205/60R16	-	92T	5.5J	/ / /		225/50R18 XL	-	99H	7.0J	/ / /
	215/60R16	-	95T	6.0J	/ / /		235/50R18 XL	-	101H	7.5J	/ / /
	225/60R16	-	98T	5.5J	/ / /		215/55R18 XL	-	99H	7.0J	/ / /
	215/65R16	-	98T	6.0J	/ / /		225/55R18 XL	-	102H	7.0J	/ / /
	215/70R16	-	100T	6.0J	/ / /		225/60R18 XL	-	104H	6.5J	/ / /
	225/70R16	-	103T	6.5J	/ / /		235/60R18 XL	-	107H	7.0J	/ / /
235/70R16	-	106T	6.5J	/ / /	245/60R18		-	105T	7.0J	/ / /	
245/70R16	-	107T	6.0J	/ / /	275/65R18		-	116T	8.0J	/ / /	
265/70R16	-	112T	6.5J	/ / /	20"		275/55R20 XL	-	117H	8.5J	/ / /
17"	LT245/70R17	E/10PR	119/116Q	6.5J		/ / /	275/60R20	-	115T	8.0J	/ / /

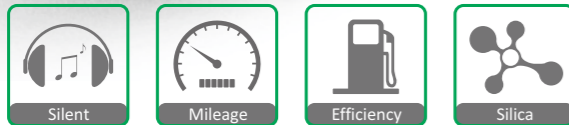


TRAILER MAX



Benefits and Features

- Radial construction tyres applicable for trailer service
- Long-life and low rolling resistance compound to offer long original treadwear and to promote fuel economy
- The reinforced sidewalls ensure a cool, long lasting tyre



Rim Size	10 - 14
Series	50 - 80
Speed Rating	N

TRAILER MAX

Rim (inch)	Size	Service Index	Standard Rim	Icons	Rim (inch)	Size	Service Index	Standard Rim	Icons
10"	195/55R10C	98/96N	6.00I	C C 72/B	13"	175/70R13	86N	5.00B	C C 70/B
12"	185/60R12C	104/101N	5 1/2J	C C 72/B	13"	185/70R13	86N	5 1/2J	C C 70/B
	155/70R12C	104/102N	4 1/2J	C C 72/B	13"	135/80R13	74N	3.50B	D C 70/B
13"	195/50R13C	104/101N	6J	C C 72/B	13"	145/80R13	79N	4.00B	C C 70/B
	155/70R13	75N	4.50B	C C 70/B	13"	155/80R13	84N	4.50B	C C 70/B
	165/70R13	79N	5.00B	C C 70/B	14"	195/70R14	96N	6J	C C 70/B



TECHNICAL INFORMATION

WINTER

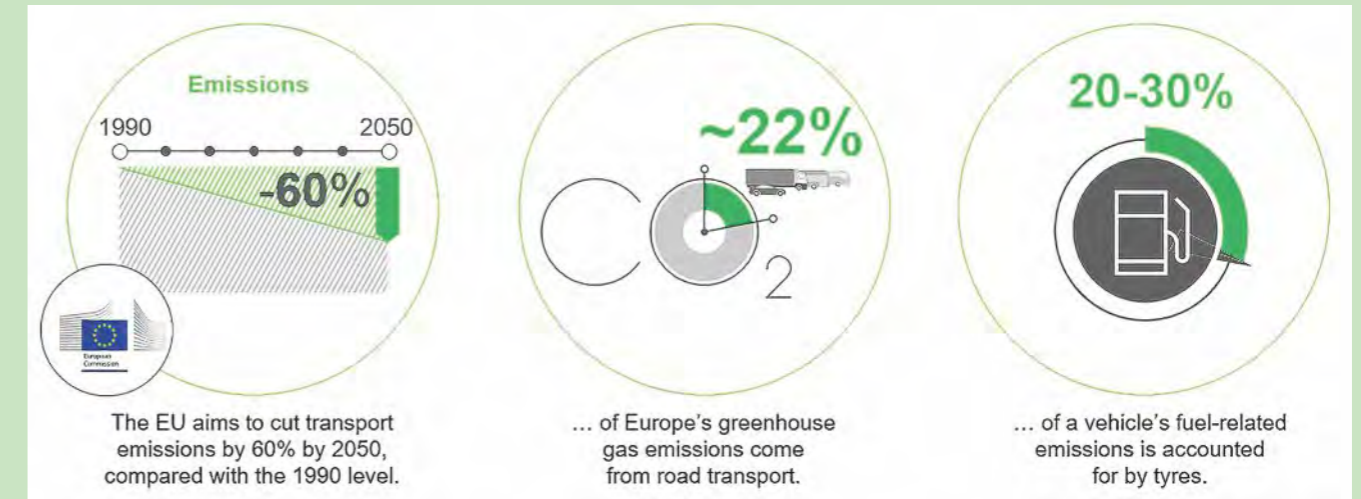
Rim (inch)	Series	Size	Pattern	LR/PR	Service Index	Standard Rim	Section Width (mm)	Overall Diameter (mm)	Max. Load (kg)	Max. Air Pressure (kpa)				
18"	60er	235/60R18 XL	SW606		107H	7.0J	240	739	975	350	/	/	/	
		245/60R18	SW618		105H	7.0J	248	751	925	300	D	E	72/B	
		245/60R18	SW606		105T	7.0J	248	751	925	300	/	/	/	
		285/60R18	SW658		116T	8.5J	292	799	1250	300	C	C	74/B	
	65er	LT275/65R18	SW606	E/10PR	123/120Q	8.0J	282	810	1550/1400	550	/	/	/	
		275/65R18	SW606		116T	8.0J	279	815	1250	300	/	/	/	
		LT275/70R18	SW606	E/10PR	125/122Q	8.0J	270	837	1650/1500	550	/	/	/	
	19"	35er	225/35R19 XL	Z-507		88V	8.0J	230	641	560	350	C	C	72/B
			225/35R19 XL	SW608		88V	8.0J	230	641	560	350	D	C	72/B
			255/35R19 XL	Z-507		96V	9.0J	260	661	710	350	C	C	73/B
			235/40R19 XL	Z-507		93V	8.0J	230	663	650	350	C	C	72/B
		40er	235/40R19 XL	Z-507		96V	8.5J	241	671	710	350	C	C	72/B
245/40R19 XL			Z-507		98V	8.5J	248	679	750	350	C	C	72/B	
255/40R19 XL			Z-507		100V	9.0J	260	687	800	350	C	C	73/B	
275/40R19 XL			Z-507		105V	9.5J	278	703	925	350	C	C	73/B	
45er			235/45R19 XL	Z-507		99V	8.0J	236	695	775	350	C	C	72/B
			235/45R19 XL	SW608		99V	8.0J	236	695	775	350	C	C	72/B
		245/45R19 XL	Z-507		102V	8.0J	243	703	850	350	C	C	72/B	
		245/45R19 XL	SW608		102V	8.0J	243	703	850	350	C	C	72/B	
50er		235/50R19 XL	Z-507		103V	7.5J	245	719	875	350	C	C	72/B	
		235/50R19	SW618		99H	7.5J	245	719	775	300	D	E	72/B	
		255/50R19 XL	SW658		107H	8.0J	265	739	975	350	D	C	73/B	
		255/50R19 XL	Z-506		107T	8.0J	265	739	975	350	/	/	/	
55er		235/55R19 XL	Z-507		105V	7.5J	245	741	925	350	C	C	72/B	
		235/55R19 XL	SW618		105H	7.5J	245	741	925	350	D	E	72/B	
		255/55R19 XL	SW618		111H	8.0J	265	763	1090	350	D	E	73/B	
20"		30er	245/30R20 XL	SW608		90V	8.5J	248	656	600	350	D	C	72/B
			275/30R20 XL	SW618		97H	9.5J	278	674	730	350	D	E	73/B
		45er	275/45R20 XL	SW618		110H	9.0J	273	756	1060	350	D	E	73/B
		50er	255/50R20 XL	SW618		109H	8.0J	265	764	1030	350	D	E	73/B
		55er	275/55R20 XL	SW606		117H	8.5J	284	810	1285	350	/	/	/
	60er	275/60R20	SW606		115T	8.0J	279	838	1215	300	/	/	/	

TRAILER

Rim (inch)	Series	Size	Pattern	Service Index	Standard Rim	Section Width (mm)	Overall Diameter (mm)	Max. Load (kg)	Max. Air Pressure (kpa)				
10"	55er	195/55R10C	TRAILER MAX	98/96N	6.00I	201	468	750/710	625	C	C	72/B	
12"	60er	185/60R12C	TRAILER MAX	104/101N	5 1/2J	159	527	900/825	650	C	C	72/B	
	70er	155/70R12C	TRAILER MAX	104/102N	4 1/2J	157	523	900/850	625	C	C	72/B	
13"	50er	195/50R13C	TRAILER MAX	104/101N	6J	201	526	900/825	650	C	C	72/B	
		70er	155/70R13	TRAILER MAX	75N	4.50B	157	548	387	300	C	C	70/B
		165/70R13	TRAILER MAX	79N	5.00B	170	562	437	300	C	C	70/B	
	80er	175/70R13	TRAILER MAX	86N	5.00B	177	576	530	340	C	C	70/B	
		185/70R13	TRAILER MAX	86N	5 1/2J	189	590	530	300	C	C	70/B	
		135/80R13	TRAILER MAX	74N	3.50B	133	546	375	340	D	C	70/B	
14"	70er	145/80R13	TRAILER MAX	79N	4.00B	145	562	437	340	C	C	70/B	
		155/80R13	TRAILER MAX	84N	4.50B	157	578	500	340	C	C	70/B	
		195/70R14	TRAILER MAX	96N	6J	201	630	710	340	C	C	70/B	

INTRODUCING THE NEW EU TYRE LABEL

Lowering car emissions with EU tyre labels



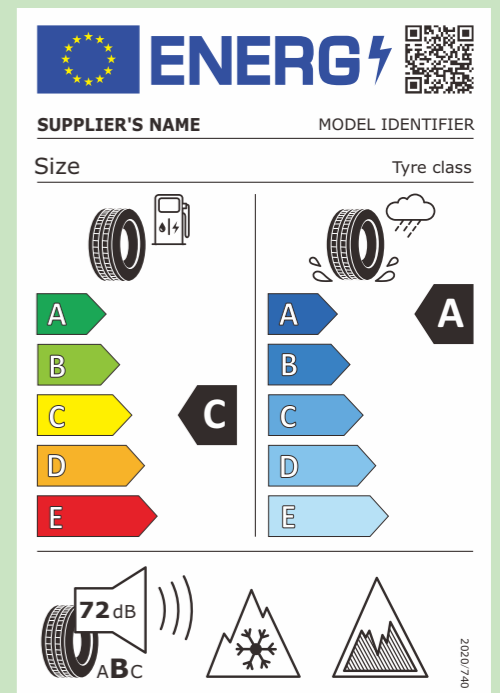
The EU has committed to cutting its greenhouse gas emissions to reach climate neutrality by 2050. Reducing CO₂ emissions from road transport plays a major part in fulfilling these goals.

Choosing more fuel-efficient tyres can contribute to reducing transport emissions. In order to help consumers make informed decisions, the EU is introducing a new labelling scheme for tyres which will come into force on May 1, 2021.

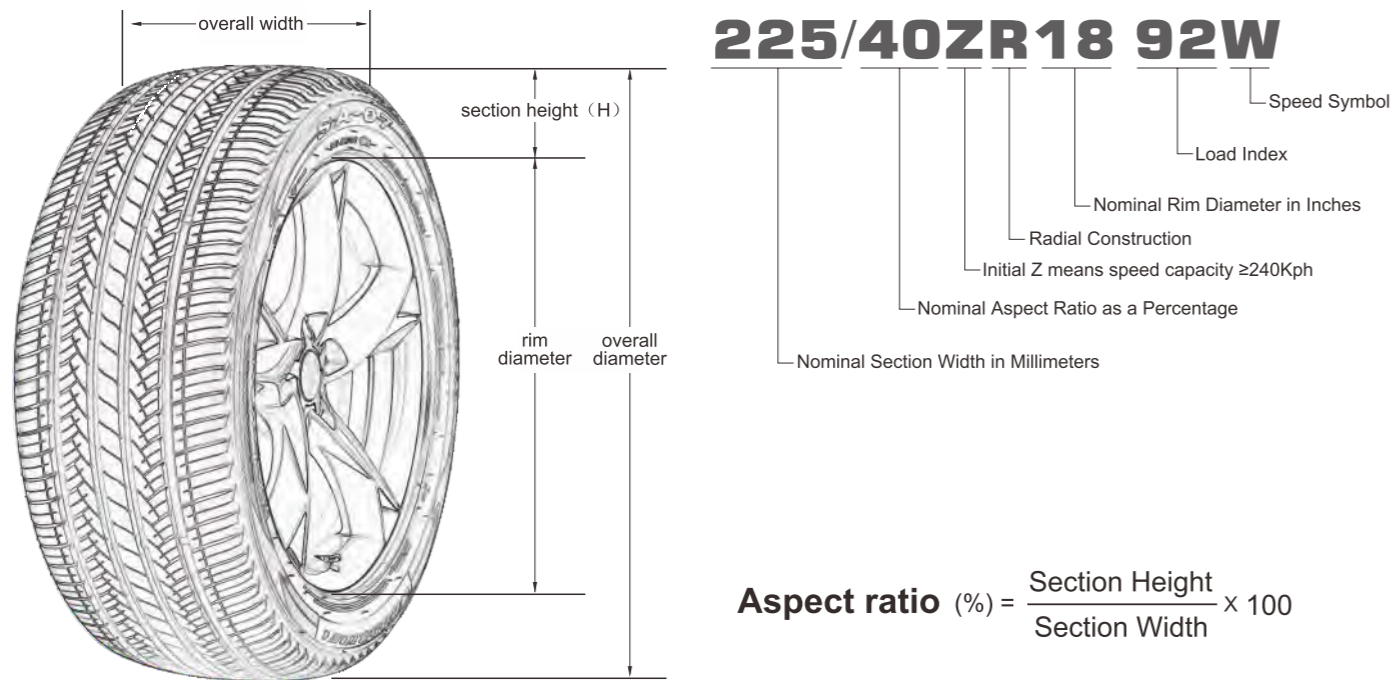
The EU tyre label will allow EU consumers to choose more fuel-efficient tyres, which can lead to great savings for both end users and commercial users in terms of both costs and emissions. Road safety is improved through better wet grip while information on noise levels help reduce traffic-related noise pollution.

The New EU Tyre Label

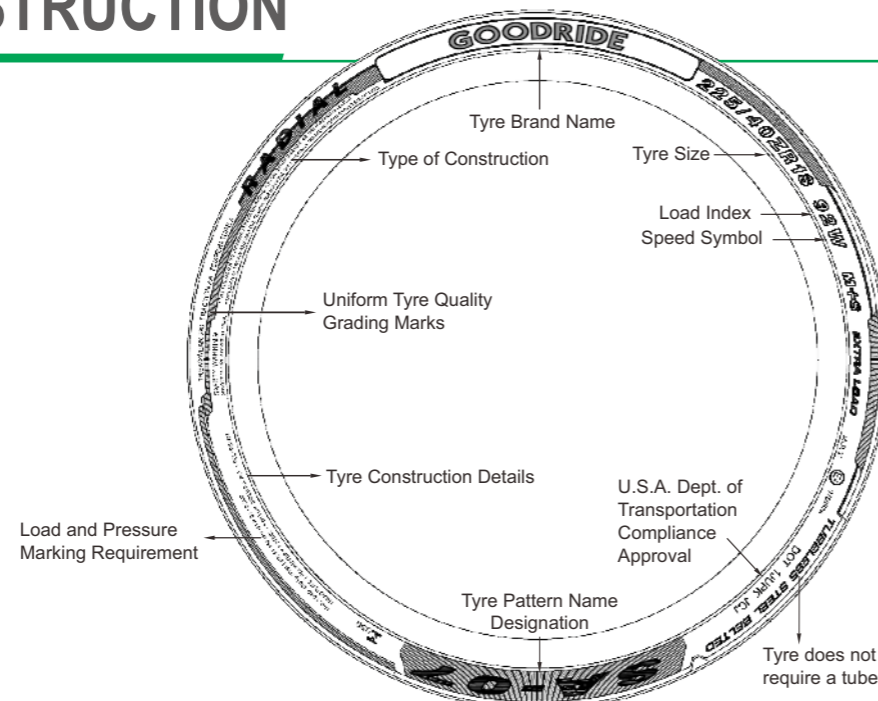
- Under the **new regulation**, bus and truck tyres will also be covered (**tyre class C1, C2, C3**).
- Additional information (**tyre type identifier = art. no.**).
- In addition to the standard label, there are also options for including icons relating to **severe snow conditions (3PMSF)** and/or grip in icy conditions (for C1 tyres only).
- Noise classes:** ABC replace sound waves.
- Reclassification for lower label classes:** D is the new E; Class D no longer empty (for C1 & C2 tyres only); F and G merge to form E.
- QR code** for each tyre type identifier with link to EU product database (EPREL).



TYRE SIZE KNOWLEDGE



SIDEWALL INSTRUCTION



OTHER MARKINGS

- P** as part of the tyre size designation (e.g., P205/65R15) used to indicate tyres intended for services on passenger cars.
- LT** as part of the size designation (e.g., LT235/75R15) used to indicate the tyres are intended for light truck vehicles.
- M&S** letters used to indicate a tyre suitable for Mud and Snow and/or All Season usage.
- XL** as part of the size designation (e.g., P235/75R16 XL) used to indicate the tyre can carry more loads as the maximum inflation pressure and load are greater than a standard load version. (Also could be called REINFORCED or RF).
- ZR** as part of the tyre size designation (e.g. 225/45ZR17 XL) used to indicate the tyre has a maximum speed over 240 kilometer per hour.

TYRE UPGRADE

"Tyre Upgrade" means: increase of rim diameter without changing of tyre overall diameter, the trend in development of low aspect ratio is called upgrade.

INCREASE OF SPORTY PERFORMANCE

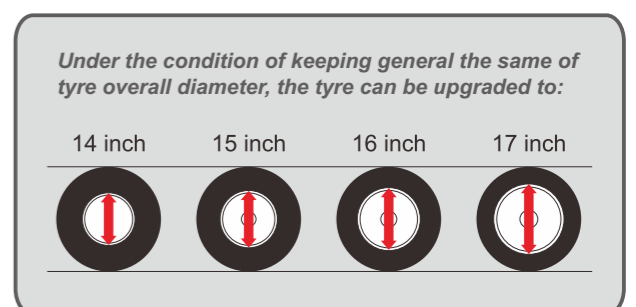
The tyre response will be more sensitive when you turn the steering wheel that the flex of tyre will be reduced, and the performance of steering and handling stability will be better, especially under medium and high speed driving.

ENHANCEMENT OF BRAKING ABILITY

The braking stability will be improved due to the decrease of tyre flex when you brake.

Please refer to the clarifications set forth below to upgrade the tyre:

- Without any particular reason, please do not change the overall diameter of tyre easily. The alternation of tyre overall diameter will cause misreading of speedometer or mutual interference between tyre and other parts of vehicle.
- Please determine the width of tyre in accordance with the specific width of vehicle. If the width of the entyre tyre is increased overly, it will cause mutual interference between tyre and other parts of vehicle, even heading out of the tyre from bodywork which will initiate danger.
- Notice the load index of vehicle when you upgrade the tyre. There is rule to the weight which the tyre can bear (load index) for each size. Please refer to the load index when you chose the proper size.



TYRE ROTATION AND INFLATION

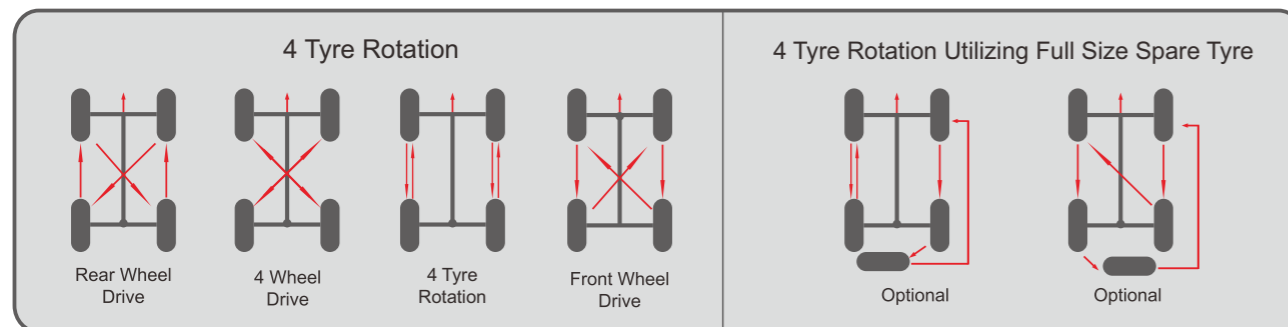
TYRE ROTATION

The purpose for rotating tyres is to achieve a more uniform wear for all tyres on a vehicle. Before rotating tyres, determine the cause of any unusual wear and correct any misalignment, imbalance, or other mechanical problems.

Otherwise it will cause: **1.** Ride disturbing; **2.** More noise; **3.** Poor ride comfort; **4.** Shorter of life span.

Note: it is suggested that tyres should be transposed as soon as the phenomena above mentioned are detected (especially the two front wheels).

The tyre transposition patterns are acceptable below. Please refer to your vehicle owner's manual regarding tyre transposition advice.



TYRE INFLATION

One of the most important aspects of tyre maintenance is proper inflation.

Sufficient inflation is needed to carry the load and avoid damage. Driving with improper inflation (particularly grossly under inflated or over inflated tyres) is dangerous and can cause critical damage or sudden failure of the tyre(s). Proper inflation should be maintained and check on at least weekly bases and before long distance drives.

Proper inflation should be maintained and checked at least once a week and before a long distance drive.

It is also advisable to take into account axle load and driving conditions when setting inflation pressure. Compensation for heavier loads can be made by increasing inflation pressure, but do not exceed maximum inflation for the tyre or maximum axle load.

In the space of just one month, a tyre can lose 10 pounds of air pressure.

It is important to check your air pressure regularly, to make sure your tyres are neither under nor over inflated.

Under-inflation

Is the worst enemy your tyre can have. It causes increased treadwear on the outside edges (or shoulders)of the tyre. It

also generates excessive heat, which reduces tyre durability. Finally it reduces your fuel economy by increasing rolling resistance-soft tyres make your vehicle work harder.

Over-inflation

Is also detrimental to the tyre. Too much air pressure causes the center of the tread to bear the majority of the truck's weight, which leads to faster deterioration and uneven wear. Any kind of uneven wear will shorten the lifespan of your tyres.

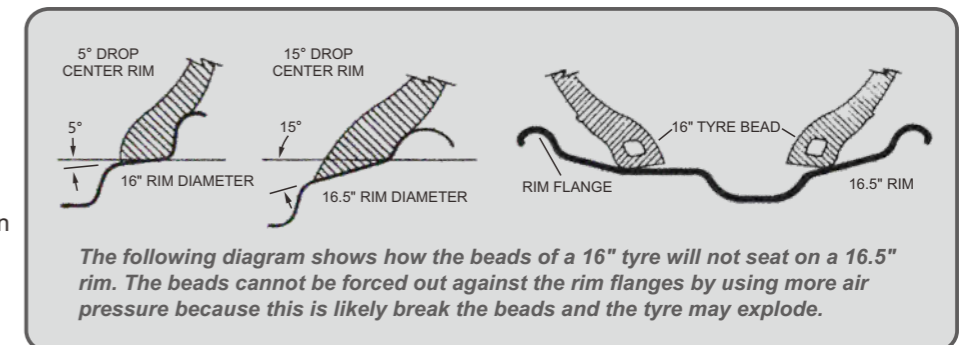
MOUNTING PROCEDURE

There is extreme danger in attempting to install a tyre of one rim diameter on a rim of a different rim diameter.

Always replace a tyre on a rim with another tyre of exactly the same diameter tyre designation and suffix letters.

For example, a 16" tyre goes with a 16" rim. Never mount a 16" size diameter tyre on a 16.5" rim. While it is possible to pass a 16" diameter tyre over the lip or flange of a 16.5" size diameter rim, it cannot be inflated enough to position itself against the rim flange. If an attempt is made to seat the tyre bead by inflating, the tyre bead may break with explosive force and could cause serious bodily injury or death.

Rims of different diameters and tapers cannot be interchanged. The top right diagrams illustrate the difference between rims of two different tapers and diameters.



FOR YOUR SAFETY AND COMFORT

Any tyre, no matter how well constructed, may fail in use as a result of punctures, impact damage, improper inflation or other conditions resulting from use.

Tyre failure may create risk of property damage or personal injury. To reduce the risk of tyre failure and for your safety and comfort, we strongly recommend the following:

- Never mount a tyre on a rim that is damaged or which has been repaired by welding or brazing.

- Never inflate beyond 275 kPa (2.75bar, 40psi) to seat beads.
- Tyre inflation should be done in a safety cage.
- Do not mix different tyre size designations or construction on the same axle, except for limited use of temporary spare tyres.
- Outer diameter of wheel should be the same as inner diameter of tyre.
- Make sure to follow instructions in the car owner's manual or on the vehicle tyre information placard in the car to maintain proper tyre pressure (Particularly driving on highway and/or when carrying heavy loads).
- Never bleed or reduce air pressure when tyres are hot from driving.
- Over- or under-inflation pressure (including spare tyre) at least once a month and before every long trip.
- Stones, gravel and other outer objects stuck in the tyre treads may damage the tyre. Remove outer objects from the tyre treads.
- Tyre should only be mounted by professionally trained persons.
- Objects in the road such as potholes, glass, metal, rocks, wood debris, curbstones and such, which could damage a tyre should be safely avoided.
- To preserve traffic safety and tyre life, ZC rubber recommends driving safely and avoiding hard acceleration, braking or cornering in unnecessary situations.
- If you feel the car is unstable or feel any unusual noises or vibrations, stop your car in safe place and inspect your tyres. Even if no visible defects are found, drive slowly and ask your dealer to inspect your tyres as soon as possible.
- Winter tyres (studless, stud or snow tyres) should not be mixed with other types of tyres.
- New winter tyre should not be driven over 80km/h for the first 100km.
- When driving on winter roads, sudden starts and quick stops should be avoid and a safe car-to-car driving distance should be maintained.
- When using tyre chains be sure to use the proper size chains and affix with priority to the drive axle.
- Avoid driving with tyre chains for long distance on roads with no packed snow or ice.

Never use a tyre under the following conditions and replace tyres immediately:

- If the tread has worn to the tread wear indicator.
- If breaks in the fabric appear.
- If cords or wires are exposed.

Storage of steel belted radial tyres:

- Keep your tyres away from direct sunlight and locations with high temperature, high moisture, heavy electrical machinery, welders etc.
- Tyres should be preferably stored in a cool, dry, and dark room with controlled environment.

To preserve traffic safety, ZC rubber recommends driving substantially slower under adverse weather or road conditions.

ROUTINE MAINTENANCE

- Each month the tyre pressure should be checked one time at least when the tyre is cool, too much or less of the pressure will cause damage to tyre.
- Please take a 15-minutes break after driving on expressway for two hours.
- Please ensure that there are no nails, metal pieces, glass or other foreign materials.
- Please ensure that there is no damage such as separation, distortion and distinct rusting which will cause air leakage.
- Please transpose the tyres regularly (approximately 5000 km) in accordance with abrasion conditions for the sake of expanding its life span and preventing eccentric wear.
- No tyre brightener.

THE INVENTORY OF STEEL-CORD RADIAL TYRE

The tyre should be placed in dry interior.

Note: In order to ensure the driving safety, we suggest that please decrease the speed while driving under atrocious weather and poor terrain condition.

